



Annual Report 2022/2023

PARKERVILLE CHILDREN
AND YOUTH CARE





Contents

Acknowledgement3

Navigating Change, Celebrating Achievements,
and Looking Forward4

Chasing our North Star6

Journey of Dedication and Innovation.....8

Our impact 10

Transforming Lives.....12

Therapeutic Services 14

Youth Services 16

Education Services..... 18

Advancing Our Advocacy Mission..... 20

Our Finances22

Our Partners..... 23

Gratitude in Action 24

Gratitude and Appreciation..... 26

Ngala kaaditj Wadjuk Noongar moort keyen kaadak nidja boodja

We, the staff of Parkerville Children and Youth Care, acknowledge we are meeting on the traditional lands of the Noongar people and pay our respects to their Elders, past, present and future, for they hold the memories, the traditions, the culture and hopes of Aboriginal Australia.

We wish to acknowledge the traditional custodians of the land we are meeting on, the Whadjuk people of the Perth region. We wish to acknowledge and respect their continuing culture and the contribution they make to the life of this city and this region.

We also acknowledge the Elders of other Aboriginal communities in which we work and live.

Navigating Change, Celebrating Achievements, and Looking Forward

by Colin Pettit, Board Chair



This has been another year of significant change and challenges for Parkerville Children and Youth Care. Shaping an organisation to be nimble in a world moving to live with Covid, requires strong leadership and ongoing commitment of everyone within it.

The launch of our strategic plan established a platform for a more sustainable future with children, young people, and families at the forefront of every decision we make. The opportunities that are articulated within the plan provide us with an exciting few years ahead. Underpinned by the values of the organisation, the plan reflects a clear direction in which we hope to shape our future, ensuring we always respond to and support the community we serve.

We are fortunate to have a dedicated and highly skilled team of caring individuals across the organisation that are committed to ensuring every child we interact with has the opportunity to be the best they can be. As a result, Parkerville Children and Youth Care continues to be recognised as an organisation of service excellence and expertise.

Recognition of signature programs such as the Multi-agency Investigation and Support Team (MIST) initiative, the continuing development of the Our Way Home initiative, and the Education, Employment and Training program, point to the commitment of our staff. Equally, the Stan and Jean Perron Child, Youth & Family Centre in Midland is an outstanding example of how a not for profit like Parkerville Children and Youth Care can lead a multi-agency approach to support the communities we serve.

Many of these initiatives have been generously supported by our philanthropic supports, and funding bodies. Without this level of generosity, many of our programs would not be possible. As such, I would like to sincerely thank everyone who commits to helping us to be the best we can be.

Fundraising continues to be a significant strategy for the organisation. To the many supporters of our events and functions, I thank you. Your support is highly valued and appreciated.



Challenges

Working through the Redress Scheme continues to provide us with challenges. At the cornerstone of managing each claim our leadership team has ensured that everyone within the process is treated with integrity and respect and where possible ensure their personal wellbeing is being catered for. I would again like to acknowledge the team for the manner in which they handle such delicate and sensitive processes.

The most significant challenge we have managed this year is that of the Award Review and Compliance program (ARC). This has been an extremely complex process. As such it has taken longer than expected to arrive at an equitable, fair, and just outcome. The work has been painstakingly completed through a dedicated team. It has also required patience from all involved with under and over payments. I thank all staff for their patience and understanding while we strive to ensure accuracy of each claim. I would also like to sincerely thank both the internal and external teams who have worked on this project.

The Board

There have been several changes to the Board over the past 12 months. Sadly, both Rev Jeremy James and Trudi Chesterton stepped down from the board after several years of dedicated service to Parkerville Children and Youth Care. My thanks for their contribution to our work. I would like to welcome Rev Julie Baker and Ms Davina Goldthorpe to the board and look forward to working with them both over the coming years. I would also like to express my sincere gratitude for the contribution each board member makes to the ongoing success of Parkerville Children and Youth Care.





Chasing our North Star *by Kim Brooklyn, CEO*

This year we commemorate 120 years of continuous service to the Western Australian community. In recognising this milestone, we acknowledge and pay our deepest respect to all former residents.

The learnings we have from the past continue to drive our commitment to design and deliver contemporary, child safe, and robust evidence-based services, and be an organisation that constantly strives for excellence in all that we do. Through this drive and dedication, we have continued to transform the way we work and strengthen our position as a trusted organisation dedicated to the safety and well-being of children, young people and their families.

As we reflect on our journey over the past year in particular, our purpose, values, and vision remain the guiding force behind every decision and action we take. Our newly crafted strategic plan now serves as our North Star, guiding the way to our future and allowing us to zero in on key areas essential for our growth and sustainability.

Our commitment to being a radically person-centred organisation continues to evolve, along with our dedication to integrated step-up and step-down service models. These models are designed to be evidence-informed, co-designed, agile, and responsive, addressing the ever-changing needs of our community. To ensure service quality across all

areas of the organisation, our Outcomes and Service Fidelity lead and Clinical and Practice Governance Group persist in delivering best practice guidelines and training so that our team is equipped and our services meet expected standards.

Our incredible team, driven by a passion for the wellbeing of children, young people, and their families, is at the core of our success. With an increased focus on their own well-being as well as that of the people we serve, our team is poised to strengthen and thrive in the coming year. We are committed to building our reputation as an employer of choice, attracting diverse talent and nurturing both existing and new team members through training, supervision, and support.

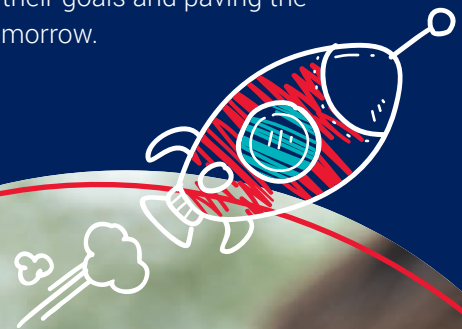
Our recent engagement with our team and the communities we serve revealed that the names of our centres were causing confusion and failing to encompass the full scope of our services, partnerships, and programs. After careful consideration and a closely contested vote, our centres have been renamed as "Child, Youth, and Family Centres." This change better reflects our multifunctional and integrated service model,

formed through collaboration with various organisations and government agencies. With a renewed focus on service integration and systems navigation at each centre, they will not only serve as specialist service hubs but also as community assets, linking people to the services they require.

While the Stan and Jean Perron Child, Youth and Family Centre is already a multiservice site for children, young people and their families, we are especially excited about our new centre in Armadale which is located under the Armadale Shopping Centre. This location will offer specialised services from the suite of programs we provide. Our goal is to welcome other providers who also specialise in providing services for children, young people, and their families as the space is designed to best meet their needs while also being discretely located. We are excited about piloting our systems navigator approach, with our reception team trained to connect individuals with the services they need, providing warm referrals.

Our plans to extend our Multi-agency Investigation and Support Team (MIST) to the southwest metropolitan area are slowly taking shape. The need for this service in the area is well established, our fundraising efforts are in full swing, with significant support from our valued partners in MIST service delivery, the WA Police Child Abuse Units. Once operational, this service will provide early intervention and integrated wrap around supports to children and young people (and their families) at a time when its desperately needed.

Looking ahead, we are filled with enthusiasm for our future and remain resolute in our mission to assist children, young people, and their families in addressing trauma and other adverse life events, helping them to achieve their goals and paving the way toward a brighter tomorrow.



Journey of Dedication and Innovation

Parkerville Children and Youth Care has journeyed through a myriad of challenges and successes, evolving into a vibrant and proficient entity at the forefront of pioneering and adaptable services for children, young people, and families in Western Australia.

Our relentless commitment to driving transformation through evidence-based therapies and leveraging specialised knowledge remains the cornerstone of our efforts. At the heart of our mission lies an unwavering dedication – to protect and elevate the well-being of children, young people, and families, while ensuring their voices are heard, their perspectives are recognised, and their requirements are valued.

Together, we aspire to build a community where every child and young person feels safe to dream, thrive, and realise their fullest potential.

What We Do

At the heart of our mission lies an unyielding commitment to drive lasting change. Through unwavering advocacy, impactful services, and comprehensive support systems, we channel our relentless efforts towards reducing the impact caused by child abuse and adverse childhood experiences. Our collaborative efforts aim to transform Western Australia into the safest place in the world to bring up children and young people.

Our Purpose

Our purpose as an organisation is to support children, young people, and their families to build skills and capacity, address the impacts of trauma and adverse childhood experiences, and develop capabilities that will enable them to be the best versions of themselves.

Our Vision

We see a future where Western Australia is the safest place in the world and all children, young people, and their families feel safe to dream, to thrive, and to reach their fullest potential.

Our Values



Bold and Courageous

We stand up for what is right and amplify the voices of the children, young people, families, and communities we support.



Curious and Humble

We search out information and data that will help us remain at the forefront on all that we do.



Caring and Respectful

We acknowledge and embrace the diversity and individuality of everyone we meet and those we serve.



Hopeful

We believe in the power of positivity and are optimistic about change, having faith that together we can overcome any challenge we may face.



Truthful and Accountable

We are committed to being open, honest, and taking responsibility for our actions.

Our Commitment to Redress

We remain committed to transparency and accountability regarding the unfortunate parts of our history that led to some children in our care experiencing abuse. This chapter in our past is not one we take pride in, and we extend our heartfelt and sincere apologies to those who endured suffering. Our objective is to engage with former residents in a manner that fosters a sense of being heard and supported, characterised by empathy, respect, kindness, compassion, warmth, and authenticity. Our aim is to aid them in their journey towards healing.

The lessons drawn from our past experiences continue to shape our approach to working with children today. As a certified Child Safe Organisation dedicated to delivering high-quality services, our teams remain unwavering in their commitment to valuing children and young people. We prioritise ensuring that their voices are not only acknowledged but also heard. These principles are central to our efforts in providing the best possible support and care within a safe environment.

A Child Safe Culture

As the first Child Safe accredited organisation in Western Australia, we pride ourselves on our Child Safe standards and approaches to service delivery. We are committed to ensuring the safety and wellbeing of children and young people by putting their best interests first in everything we do. Parkerville Children and Youth Care operates to the highest standards of ethics and professionalism and in accordance with the Australian Childhood Foundation's Safeguarding Children Standards and we are proud to have once again been successful in reaccreditation with commendation on our Child Safe culture embedded throughout the organisation. We hold ourselves to exemplary conduct, never losing sight of the trust that families and the community have placed in us to help transform the lives of children and young people at the heart of Parkerville Children and Youth Care. We have taken the learnings of the past into the organisation we are today to focus on the future and the potential of every child

who finds their way to us. Our recruitment, training and operating procedures safeguard children and protect them. Parkerville Children and Youth Care has a comprehensive reporting process to ensure any suspicions and disclosures of child abuse are identified and dealt with. Abuse in any form will not be tolerated.

A Place for Everyone to Feel Safe

At Parkerville Children and Youth Care, our unwavering commitment revolves around expanding our knowledge and deepening our understanding of the diverse needs of individuals from all walks of life and backgrounds. We wholeheartedly embrace diversity, actively incorporating inclusivity into our very essence. Our aim is to create environments where children, young people, and their families not only experience a warm welcome but also a profound sense of safety and recognition.

We extend our wholehearted embrace to our diverse community and offer our deep respect to the First Nation Peoples of Western Australia. Our pride lies in our dedication to taking meaningful steps towards reconciliation, as demonstrated by our Reconciliation Action Plan (RAP). We are steadfast in our commitment to a vision where every Aboriginal and Torres Strait Islander child, young person, and family can enjoy equality, dignity, and respect in their lives. Central to our aspirations is the provision of culturally competent, secure, and safe services tailored to their unique needs. Our ultimate goal is to ensure that all children, young people, and their families receive unwavering support, not just for survival but for thriving.

We are grateful for the invaluable guidance of our Aboriginal Practice Leaders and staff, as well as our service delivery partners and training development consultants. Their support and coaching are assisting us to continually improve our ways of working, build our confidence and capabilities, and expand our knowledge and understanding so that we can ensure our services are not only culturally safe, but also highly responsive to the needs of the communities we are privileged to serve.

Our Impact

At the heart of Parkerville Children and Youth Care, there is a deep sense of purpose and connection with the children, young people, and families we serve.

This past year saw our programs and services delivering services to over **13,540** children, young people, and their families.

While our services are far-reaching, we couldn't do it without the warm welcome we receive from the communities we operate in. Thank you to everyone who shares their community with Parkerville and the children and young people we serve.



458

Children and young people supported by Therapeutic Services



1,437

Children affected by child sexual abuse supported in our Child, Youth and Family Centres



186

Children supported through Protective Behaviours Education



163*

Children and young people provided a safe place to live in our Foster Care, Group Homes and Youth Accommodation programs



20**

Education, Employment and Training students graduated with their Certificate II in General Education

* We have achieved significant placement stability in Foster Care, leading to reduced client turnover and consequently, fewer placement numbers, which is indeed a positive outcome.

** One student departed from our Education, Employment, and Training program before completing graduation in order to pursue a roofing apprenticeship. This is a successful outcome not shown in our statistics.



56

Families supported through
Community Services Program



68

**Individual AOD counselling
sessions provided** to young people



11,166

**Children and parents attended
early Intervention Sessions** held
at Child and Parent Centres



260

Young people attended an
AOD Group Education Session



54

**Young people and families
supported** through the
Reconnect and Moving Out,
Moving On Programs



2,723

**Children and parents
attended a health appointment**
at Child and Parent Centres

Transforming Lives:

Our Out of Home Care Approach with the Our Way Home Model

Parkerville Children and Youth Care is dedicated to providing a nurturing and therapeutic environment through our Out of Home Care program, where children and young people can embark on a transformative journey of healing and growth, guided by a dedicated team of multidisciplinary professionals and caregivers. Our foremost goal is to empower these individuals to recover from their past traumas and flourish in their lives.

Our role as a trusted provider is to offer a range of care options tailored to the specific needs of each child and young person. These options encompass potential reunification with their biological families, facilitated by robust support systems, as well as the opportunity for a transition to long-term Therapeutic Foster Care. Additionally, we offer placements in therapeutic family group homes or community-based cottages, all designed with the utmost care to promote the well-being and development of the individuals entrusted to us.

Central to our approach is the Our Way Home model, a pioneering framework that empowers children, young people, and their families within the care system. It is rooted in the profound belief in the value of strong families and cultural connections. Our Way Home strives for deeply personalised 'shared care' relationships between caregivers and families, acknowledging that people who grow up without such connections face enduring challenges in their well-being. This model actively fosters connections between our Professional Therapeutic Cares, Community-Based Foster Carers and children's families of origin, promoting shared caregiving and opportunities for reconnection. Supported by innovative staff roles and creative tools, Our Way Home embodies a shift in mindset, recognising families as equal partners in each child's unique journey toward restoration.

Out of Home Care

Foster Care

We offer two types of Foster Carers: Therapeutic Foster Carers who provide long-term support and stability for children **until they turn 18**, and Respite Carers who offer weekend and holiday care. Our Therapeutic Foster Carers, from diverse backgrounds, undergo a thorough assessment process before carefully matched placements occur. They play a vital role in positively impacting the lives of children by offering love, stability, and a nurturing family environment.

Family Group Homes and Tier One Homes

Our specialised residential facilities are designed to address the unique needs of individual children or sibling groups, serving as the primary placement for most of the **children and young people** in our care. These homes, staffed by highly skilled caregivers, place a strong emphasis on healing and personal growth, following assessments conducted by the Department of Communities Child Protection teams. They provide secure and nurturing environments for children, offering a range of care options, including family reunification, transition to Therapeutic Foster Care, or placement within our community-based therapeutic homes.

Seanan, Family Link Worker

Allow us to introduce Seanan, our dedicated Family Link Worker. She plays a vital role in our important mission of rebuilding connections and fostering relationships within families when children are placed in care. Her ultimate goal is to facilitate connections between children and their families, as well as between caregivers and families.

Her journey with one specific family powerfully illustrates the profound impact of her work and its transformative potential.

When Seanan first encountered this struggling family, consisting of a mother and her three children grappling with significant challenges, the prospect of reunification seemed unlikely. Seanan embarked on a gradual approach, focusing on rebuilding the mother's relationship with her children. She offered support in honing essential parenting skills, provided guidance on engaging with the children, and orchestrated opportunities for quality bonding time. This included participation in activities such as swimming lessons and school meetings, fostering a path towards rebuilding the family's relationships.

Over time, this family underwent a remarkable transformation. The mother's commitment to change was evident through her engagement with counsellors, psychologists, and various support programs. In this transformative journey, Seanan played a pivotal role as a dedicated support system.

Seanan not only provided practical assistance such as arranging transportation to appointments, aiding with grocery shopping, and ensuring the family had essential items, but also acted as a liaison with the Department of Communities where she would relentlessly advocate for the mother to have a more significant voice during the reunification process.

Furthermore, Seanan worked diligently to nurture a positive and constructive relationship between the mother and the foster carers of the children. This strategic effort was aimed at promoting smoother reunification prospects, recognising the importance of harmonious relationships in this delicate process.

The family's progress was evident as they moved from supervised visits to sleepovers, a clear indication of improved dynamics. The mother's dedication, coupled with Seanan's support, resulted in one child returning to her full-time care, while the other two enjoyed regular sleepovers at home.

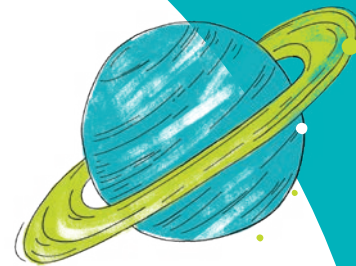
Reunification, once deemed nearly impossible, is now within reach. The family is on track to reunify, underscoring the power of patience, support, and empathy in family reunification.

For Seanan, the most rewarding aspect of her job is witnessing the sheer joy and excitement in children when they reunite with their families. These moments, filled with emotional connection, make all the effort worthwhile.

On a professional level, this journey taught her the importance of refraining from judgment and recognising that there is often more to a person's story than meets the eye. She gained a deeper understanding of the challenges parents face, especially when they lack a robust support network. Building a strong support system for families in need is paramount to their success.

Seanan's dedication, empathy, and commitment have not only transformed the lives of children and families but have also contributed significantly to the organisation's objective of creating brighter futures for children and young people right here in Western Australia. Her work serves as a testament to the difference that a supportive and compassionate approach can make in the lives of those facing adversity.





Therapeutic Services:

Empowering Lives and Promoting Healing

Parkerville Children and Youth Care's Therapeutic Services encompass a wide spectrum of support, ranging from formal psychotherapy addressing trauma and abuse-related concerns to programs dedicated to preserving families and communities. Our "Protective Behaviours" initiative is a crucial part of our mission, equipping children, young individuals, and families with essential skills to ensure child safety in challenging situations. We are continually inspired by the resilience and determination displayed by the children and young people we serve as they bravely work to forge connections, engage actively, and triumph over the obstacles they encounter.

Our dedicated team of professionals and therapists tirelessly provide a safe, supportive, and nurturing environment for these individuals, helping them on their journey toward healing, recovery, and growth. At Parkerville Children and Youth Care, we believe in the inherent potential of every child and young person to heal and thrive, and we are committed to assisting them in realising their full potential. Our efforts exemplify the resilience of the human spirit and the transformative impact of community support on the lives of the individuals we assist, one child, one family, and one community at a time.

Therapeutic Services

Multi-Agency Investigation and Support Team (MIST)

A collaborative initiative involving WA Police Child Abuse Squads, the Department of Communities, and Parkerville Children and Youth Care, dedicated to providing specialised support and comprehensive services to **children, young people, and families** affected by child sexual and physical abuse. This holistic approach ensures a safe and healing environment from the first encounter, empowering families with coping skills, and guiding them through interviews, court processes, and therapeutic healing, promoting lasting positive outcomes.

Child Sexual Abuse Therapy Services

Specialised therapeutic support for **children, young people, and adults** who have experienced or been impacted by child sexual abuse. Additionally, it offers guidance to those who are at risk of or involved in inappropriate sexualised behaviours, fostering healing and prevention.

Cool Kids

An evidenced-based anxiety and stress prevention initiative designed for children aged **6 to 12 years**. It is delivered in collaboration with Communities for Children at nearby primary schools within the southeast corridor.

Fee for Service Psychology

Provides individual psychological intervention and assessments to **children, young people, parents/carers, and families** who may have encountered trauma resulting from abuse.

Homicide Support for Children

Offering psychological intervention, assessment, and support to **children, young people, and families** impacted by homicide in metropolitan Western Australia. Our trauma-informed approach focuses on personalised care, prioritising emotional healing and recovery in a safe environment.



Simone, Senior Child and Family Advocate

Simone, a Senior Child and Family Advocate, plays a crucial role within our Multi-agency Investigation and Support Team (MIST), which is a collaborative model between WA Police Child Abuse Squads, Department of Communities and Parkerville Children and Youth Care. The team provide vital support to children, young people, and families impacted by child sexual abuse and physical abuse. Simone's work is centred on assisting children and youth during police interviews, court proceedings, and their therapeutic healing process, ensuring they have a safe emotional space alongside their parents during these challenging times.

Simone's expertise extends to guiding families through the complexities of the legal system, connecting them with long-term support services, and addressing the unique challenges of parenting children who have experienced significant trauma. They also serve as a strong advocate within various systems and actively mentor newer advocates, fostering a culture of ongoing improvement.

In a recent notable case, Simone played a pivotal role, offering unwavering support to a 15-year-old client who faced a challenging court case. Despite a disheartening verdict, Simone remained a constant pillar of emotional support. She also played a key role in facilitating a connection between the

family and Parkerville's family therapist, Lesley, whose assistance proved indispensable. This support was particularly critical for the mother, who felt emotionally stuck during the ongoing proceedings and needed time to process the situation.

Even though the case has now concluded, Simone continues to check in with the young person every two weeks to monitor her progress. Remarkably, the client has displayed incredible resilience, persisting in attending school and work. While there are still some challenges with her mental health and her mood remains low, she has made significant strides in her journey to healing.

Beyond her immediate support role, Simone is committed to community outreach and education, conducting workshops on important subjects such as Protective Behaviours, and upskilling other community services.

Despite the emotional toll that comes with her role, Simone's dedication to her mission remains unwavering. She aspires to standardise and expand the advocacy model, collaborate with partner agencies, and promote trauma-informed practices within the police force.

Simone's journey as a Senior Child and Family Advocate is a testament to her unyielding commitment to empowering resilience and providing unwavering support to children and families during their most challenging moments, one case at a time.

Youth Services:

Building Secure Futures

Parkerville Children and Youth Care's Youth Services and Supports are dedicated to making a profound impact on the lives of young people facing homelessness or those at risk of becoming homeless. Our mission is to provide crucial support and resources, enabling these youth to secure stable housing and attain the independence they deserve.

At the heart of our approach is the unwavering belief in the potential and resilience of every young person we serve. Our services do more than offer assistance; they initiate a journey of self-discovery and personal growth. Through our guidance and support, these young individuals can lay claim to their unique identities and find their sense of purpose.

Claiming one's identity is not just about recognising who they are but embracing their talents, aspirations, and dreams. This transformative process allows these youth to comprehend their intrinsic worth and untapped potential fully. Beyond immediate housing needs, our focus is on helping them envision and create a brighter future. We equip them with the skills, knowledge, and confidence to not only secure housing but also thrive in life, fostering resilience and self-reliance. By breaking the cycle of homelessness and facilitating long-term success, we not only enhance the lives of young people, but also contribute to a stronger, more prosperous society. Ultimately, their journey towards secure housing and independence becomes a story of hope, resilience, and transformation that benefits us all.

Youth Services

Armada Youth Accommodation Service

A six-bed short-term crisis accommodation for young people aged **15 to 20 years** who are experiencing, or at risk of, homelessness and two transitional units that can accommodate two young people in each unit for longer periods.

Young Women's Program

A semi-independent accommodation service with four units located in Armadale, offering support and education to mothers and single women aged **16 to 25 years** to develop their parenting skills, and to further develop independent living skills.

Moving On Moving Out

An outreach program that is designed to help young people aged **15 to 21 years** who are at risk of, or experiencing, homelessness, or who are residing in crisis or temporary accommodation.

Reconnect

A free, voluntary and confidential program to help prevent young people aged **12 to 18 years** from experiencing homelessness and encouraging them to stay connected with family and the community.

Alcohol and Other Drugs

A comprehensive service that supports young people aged **12 to 25 years** to reduce the harmful impacts of drug and alcohol use.

Support and Community Service

A confidential support service that provides special attention to children aged **4 to 14 years** who are experiencing homelessness. We work closely with the whole family, to help bring about the change they need to build a brighter future.

Amber, Drug and Alcohol Worker

In the heart of Parkerville's Youth Services, 'amid the trials of homelessness and addiction, Amber, our dedicated Drug and Alcohol Worker, shines a guiding light for the young people we assist. Her mission is clear: to educate and empower young people who seek our services. Amber's unwavering dedication is centred on the principles of harm minimisation and harm reduction, actively reinforcing protective measures, promoting awareness and transparency regarding their behaviour, and collaborating with them to identify and enact life changes that support their overall well-being.

Every day, Amber faces the unique challenges within Parkerville's crisis accommodation facilities, where clients frequently come and go, each with their own struggles. In this environment, Amber breaks down barriers and stigma, offering a supportive space for young people to address their alcohol and drug use through one-on-one counselling, group therapy, and harm reduction-focused educational programs.

With empathy in her voice, she assures the young people that they are not facing judgment here at Parkerville. Instead, she creates a supportive space where they can open up about their struggles and work towards solutions together. Amber's approach involves providing one-on-one counselling, group therapy sessions, and facilitating educational programs focused on harm reduction. Through these interventions, she empowers her clients with the knowledge and tools they need to make positive changes in their lives.

Amber's dedication goes beyond immediate crises. She conducts thorough assessments to identify the root causes of her clients' drug and alcohol use, helping them understand the underlying issues they may be trying to cope with. By fostering trusting relationships, she ensures that her clients feel heard and valued, instilling a sense of hope and self-worth.

Amber's impact is profound. She helps clients find stability, regain their confidence, and take the first steps towards rebuilding their lives. Her ability to create a safe and non-judgemental environment enables young people to make informed decisions and take control of their futures. Through her unwavering support and commitment, Amber is a guiding light, illuminating a path to recovery and healing for those who need it most.

Within this dedication to her clients lies an inspiring story of success—a narrative that perfectly encapsulates the essence of her work. Two young girls, both navigating the challenges of drug and alcohol misuse which had started as a way to cope with significant past traumas, found solace in each other's company. Their friendship initially served as a safe haven, providing comfort and understanding during challenging times.

However, as time passed, their bond faced its share of trials, eventually leading to a rift in their friendship and their decision to leave the Crisis Accommodation. Yet, thanks to Amber's dedication, her continued support, and her relentless advocacy for their access to long-term housing, they discovered a ray of hope, a stable foundation, and the prospect of healing from their past traumas.

Their story takes a positive turn. Guided by Amber's unwavering support, these two resilient girls embarked on a journey of transformation. Through her compassionate intervention and referral to long-term accommodation.

Today, they remain inseparable friends, living together and sending regular updates to Amber and our crisis accommodation staff about their progress. Their story serves as a testament to the incredible power of healing and resilience, even in the face of daunting challenges. It is a testament to the profound impact that Amber has on the lives of those she serves, demonstrating the potential for growth and renewal in the wake of adversity.



Education Services:

Nurturing Growth and Development

Parkerville Children and Youth Care is unwavering in its dedication to nurturing the potential of children and young people within our community through our Education Services. These services are committed to nurturing the future leaders and change-makers of our society.

At the heart of our educational initiatives lie two pivotal pillars: the Child and Parent Centres located at Brookman and Westfield Park and the Education, Training, and Employment Program situated within our serene Parkerville Campus.

The Child and Parent Centres serve as vibrant hubs of learning and support for families. Here, we facilitate early childhood development by providing a nurturing

space for children to learn, play, and grow while also offering valuable resources and guidance for parents.

Simultaneously, our Education, Employment and Training Program equips young people with the knowledge and skills they need to navigate life successfully, emphasising the importance of ongoing education and vocational training.

These two pillars underscore our commitment to fostering growth and unlocking the potential of every young person in our community, ensuring a brighter tomorrow for all.



Education Services

Education, Employment and Training Program

This program offers a holistic approach that combines education, employment, and training, empowering students with crucial skills and providing them with the equivalent of a Year 10 education along with a Certificate II in Education. Our program serves as a lifeline for adolescents aged **14 to 17 years** who have faced difficulties in mainstream education, often due to adverse childhood experiences and complex trauma. For these students, their future is uncertain, and they require an opportunity to overcome the obstacles that have hindered their progress.

Child and Parent Centres

These centres focus on children aged **0 to 8 years**, with a special emphasis on those aged **0 to 4 years**. They offer cost-free playgroups, early intervention programs, parent education, and easy access to health and support services. By offering these services, the program helps families in the Brookman and Westfield Park areas support their children's development and well-being, ensuring a strong foundation for their future success.

Moshda, Playgroup Officer

We are delighted to introduce Moshda, our remarkable Playgroup Officer at Parkerville Children and Youth Care's Child and Parent Centres.

Moshda has been an invaluable member of our team since 2015, and her journey here has been one of growth and dedication.

In her role, Moshda takes charge of coordinating a diverse range of playgroups, including a playgroup for children aged 0-4, a pre-kindy group preparing 4-year-olds for school, and has exciting plans for a baby group in the near future. These playgroups are designed to be safe, inclusive spaces where families can find support, with a strong emphasis on child development.

Within our playgroups, Moshda nurtures an environment that promotes learning through play, fostering growth in young children. Additionally, in our pre-kindy groups, she introduces structured activities aimed at preparing youngsters for their educational journey. Her mission aligns with our program's goals, focusing on equipping children for their next educational phase and providing valuable guidance to parents during this transition.

With a commitment to meeting the diverse needs of children, regardless of their age or background, Moshda carefully plans activities that engage their senses and fosters the development of fine motor skills. During these two-hour playgroups, she also gathers valuable information about each child's behaviour at home, helping her better understand their needs.

While Moshda cannot diagnose children, early intervention plays a vital role in her responsibilities.

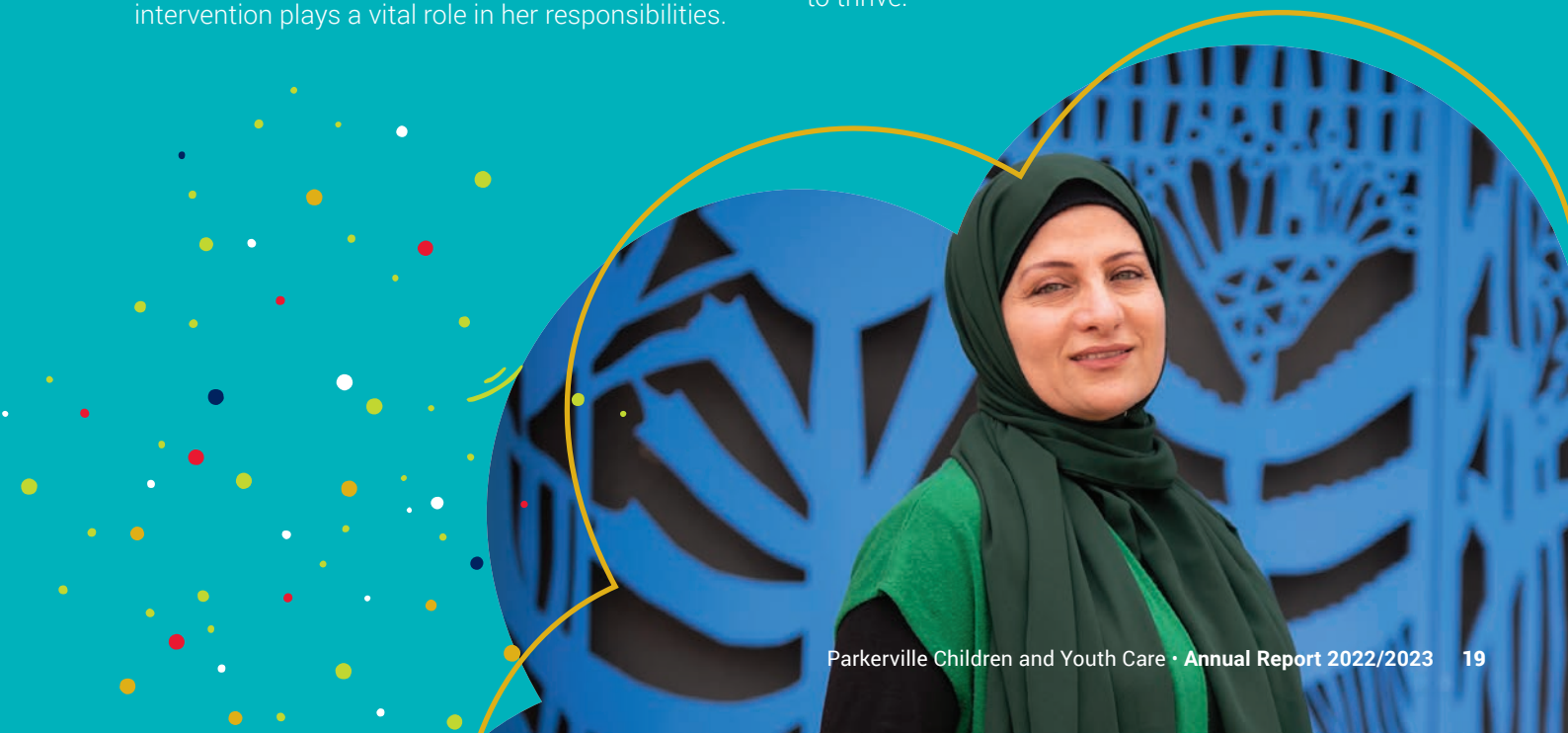
When she observes concerns, she facilitates connections between families and child health nurses or speech therapists, who visit our playgroups regularly.

Moshda expresses that one of the most gratifying aspects of her role is the privilege of witnessing children's growth and development. Her passion for working with children shines through as she helps them explore and learn about the world around them.

In her role, effective communication, cultural sensitivity, and the ability to connect with children and parents are paramount. It's important to note that at Parkerville Children and Youth Care's Child and Parent Centres, families can rely on a safe space where their children are assured of security and non-judgment. Here, they can openly share their experiences and challenges, with confidence that they will receive understanding and support.

What sets Moshda apart is her unique journey with the Centre. She initially engaged with us as a parent, later joining the team in a voluntary capacity, and eventually becoming an official part of the Parky team. This journey allows her to bring a profound understanding to her role, as she has travelled a path not unlike many of the Culturally and Linguistically Diverse (CaLD) families in our community.

Looking ahead, Moshda is excited about the potential to make a positive impact on more children and families in the community. She remains committed to evolving in her role to meet the ever-changing needs of the families Parkerville Children and Youth Care's Child and Parent Centres serve, all while continuing to create a safe and nurturing space for children to thrive.



Advancing Our Advocacy Mission

This year, we have strengthened and re-focused our advocacy efforts, with a clear focus on demonstrating both the individual and collective impacts of our services and supports.

Our aim is to leverage our expertise to educate, inform and influence social policy, ultimately driving positive change in our community for the benefit of children, young people, and their families.

Over the past year, our advocacy efforts have been purposeful and strategically targeted towards policy platforms that can bring tangible improvements to the lives of the people we serve. Some of our notable initiatives include:

1. Parliamentary Engagements in Western

Australia: We have actively participated in parliamentary inquiries, including the Inquiry into Child Development Services and the Inquiry into Options Available to Survivors of Institutional Child Sexual Abuse in Western Australia who are seeking justice. These engagements allowed us to voice our perspectives and contribute to informed policy decisions.

2. Engagement with the Australian Government:

We've submitted responses to key initiatives, such as the Treasury's proposals on access to offenders' superannuation for victims and survivors of child sexual abuse. Additionally, we've provided input to the Office for Women's National Strategy to Achieve Gender Equality and the Whole-Of-Government Early Years Strategy, influencing national-level policies.

3. Feedback on National Initiatives:

We've actively reviewed and provided feedback on the National Centre for Action on Child Sexual Abuse Stage 2 Draft Five-Year Strategy, ensuring that our expertise contributes to the development of effective strategies.

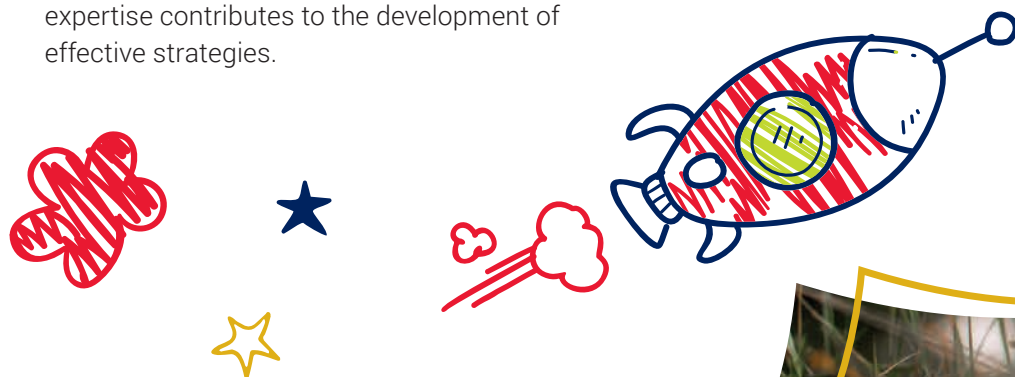
4. Active Participation in Policy Consultation:

We've actively engaged in current policy consultation processes, including the development of the Western Australian Government's Sexual Violence Prevention and Response Strategy and the National Housing and Homelessness Plan. While these activities fall outside of the financial year reporting period, they remain crucial components of our commitment to advocacy.

5. Leadership in Sector-Wide Advocacy:

We've taken a leadership role in sector-wide advocacy efforts at the local, state, and national levels with a focus on elevating the voices of the communities that we serve and to disseminate and build knowledge of best practice to inform policy solutions. This commitment is exemplified by our CEO, Kim Brooklyn, who not only chairs the Children's Policy Advisory Council but also consistently lends her expertise as a respected policy expert. Her recent role as a panelist at the WA launch of the Australian Child Maltreatment Study, alongside the WA Commissioner for Children and Young People, underscores her instrumental contributions to shaping critical discussions and policy decisions in our field.

Our advocacy endeavours continue to serve as a driving force for positive change, empowering our organisation to make a lasting impact on the communities we are dedicated to supporting.





Our Finances

Parkerville Children and Youth Care receives income through contracts as awarded by various funding bodies which assists to provide services in the community, philanthropic grants which develops innovation and capacity, alongside investment income and donations gifted by the community.

Parkerville Children and Youth Care is a registered charity with the Australian Charities and Not-for-profits Commission (ACNC) and holds a Deductible Gift Recipient (DGR) status as endorsed by the Australian Taxation Office (ATO).



This means the community is able to make tax-deductible donations to our organisation and can trust that we operate in a transparent and ethical manner at all times.

As always Parkerville Children and Youth Care is grateful for the philanthropic support we receive from both grants and community gifts. This year's support was instrumental to ensuring the continuation of critical services through funding to our Child, Youth and Family Centres and MIST program, which we thank The Stan Perron Charitable Foundation, Telethon, Westpac, Department of Justice, and those who supported via our Annual Charity Lunch in 2022 for their support. These funding opportunities remain an important part of our sustainability.

Sources of Funding

During the 2022/2023 financial year, Parkerville Children and Youth Care received \$21.68 million in income which enabled our people to continue to provide services to children, young people and their families.

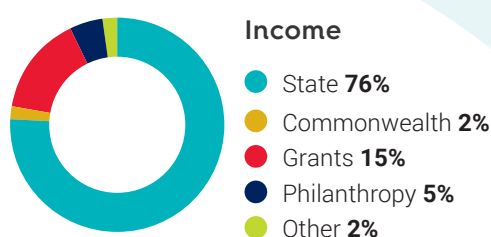
The Western Australian State Government continues to be a key stakeholder, with 77% of our funds being from contracts awarded from various state government departments and used to provide highly specialised services to some of our community's most vulnerable children, young people and their families. A further 2% is provided by the Commonwealth Government, supplementing our funds for these services.

Expenditures

During the 2022/2023 financial year, Parkerville Children and Youth Care employed a total of 240 staff, with a staff compliment, at any given point in time, of between 160-180 employees, most of whom were directly providing services for our clients.

Parkerville Children and Youth Care incurred program expenditure of \$18.5m, up 7.6% on the prior year (this is excluding depreciation and non-operating expenditure).

Given the historic nature of the work Parkerville Children and Youth Care participates in, there are Civil and Redress claims currently underway, or being settled. Parkerville has set aside funds to meet these claims. These funds were sourced from sale proceeds of historical assets and non-operational or donated funds.



Our Partners



Government of **Western Australia**
Department of **Communities**



STAN PERRON
CHARITABLE
FOUNDATION



Department of
Education



Government of **Western Australia**
Mental Health Commission



Australian Government
Department of Social Services



**Criminal Property Confiscation
Grants Program**



Supported by
**WA Primary
Health Alliance**



**HERITAGE
COUNCIL**



HANCOCK PROSPECTING



Gratitude in Action:

Honouring Our Generous Donors

Diamond

- The Stan Perron Charitable Foundation
- Hancock Prospecting
- O'Brien Group Services

Platinum

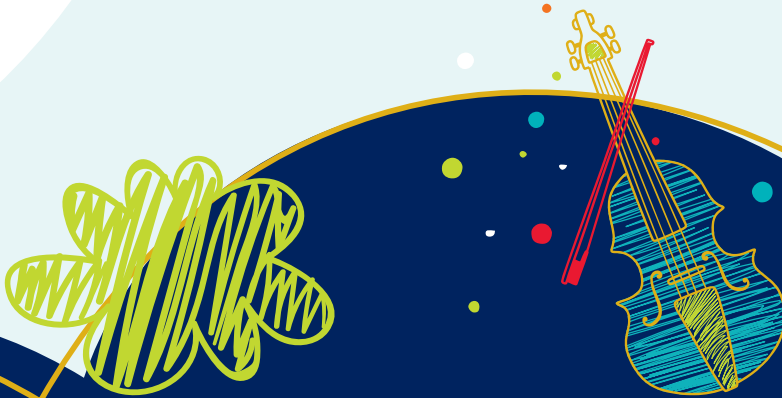
- Anglican Community Fund
- Donnelly Garner Foundation
- King & Wood Mallesons
- Lake Karrinyup Country Club
- Mimi Packer
- The James Galvin Foundation
- The Oliver Charitable Foundation

Gold

- Anglican Church of Australia
- BGC
- Blackwoods
- Chris Reed
- DLA Piper
- Hoskins Contracting
- Joan Barnett
- Neometals
- Wesfarmers Limited

Silver

- Anglican Parish Turquoise Coast – Dandaragan – Eneabba
- Anglican Parish of Woodlands – Wembley Downs
- Bankwest
- Claudia Crotty
- Damian Fewster
- Jeanette Potts
- Nicholas Young
- Reliable Process Maintenance
- Scotch College
- St Mary's Outreach Service
- Terence Prindiville
- The Tuite Family Foundation
- Titan Recruitment
- Tom Dawson



In a touching and inspiring journey, **Mr Raymond Clifford Dean**, once a resident at Parkerville Children's Home during the 1900s, learned to play the violin under the guidance of Sister Kate, the organisations founder. Mr Dean's decision to leave a bequest to Parkerville Children and Youth Care in the 2019/20 financial year has established a profound and enduring legacy. This legacy ensures sustained support for the children and young people we serve, while also creating opportunities for youth to express themselves through the arts, all in the honour of Mr Dean's generosity.



Bronze

- Angela Crotty
- Anglican Parish of City Beach
- Anglican Parish Thornlie
- BGC Housing Group
- Breeanna-Eve Dawson
- Brett MacRae
- Bunnings Group Limited
- Callum Wittcomb
- Capital Partners
- Chere McCloy
- Christina Matthews
- Clifton Hills Primary School
- Combined Logistics Pty Ltd
- Connect Resources
- Ellis House Community Art Centre
- Fulton Hogan Ltd
- Gerard O'Brien
- Greenmount Primary School
- Harold Payne
- Helen Hesselberg
- Henry Brown
- H Troon
- Infocus Money Management
- JBWere Charitable Endowment Fund
- Jody Fewster
- John Beaverstock
- Joy Wearne
- Kirstin Lopdell
- Mandy Friars
- Mark Giglia
- Maria Harries
- Maria Kailis
- Marina Alvaro
- Mary Anne Stephens
- Melville Woodturners
- Michelle Dunlop
- Mirvac WA Pty Ltd
- Mobistorage

- Oracle
- Paul Hamilton
- Perth College
- Perth Hip and Knee Clinic
- Peter Dumas
- Petroleum Exploration Society of Australia Limited
- Philip Davies
- Public Transport Authority
- Rachel Pearce
- Ra Stewart
- Rivet
- Ronald Campbell
- Roselane Nominees Pty Ltd
- Roy Hill
- Teresa & Trevor Dodd
- Sally-Ann Parker
- ScotPac Business Finance
- Shape Australia
- Susan Gillett
- Susan and Nigel
- Swan Towing
- SMS Mining Services
- Specsavers Pty Ltd
- Tango Investments

Gift of Legacy

- Beryl Hume
- Mr & Mrs Marcus Stone
- Perpetual Foundation – John and Betty Johns Endowment

Gratitude and Appreciation:

Thank You for Your Support

At Parkerville Children and Youth Care, we are deeply grateful for the support we've received over the past year.

Your commitment to our vision of making Western Australia the safest place in the world for children and young people to thrive has been nothing short of extraordinary.

Our organisation thrives because of the incredible individuals and groups who stand with us. From the bottom of our hearts, we extend our sincere appreciation to:

Our Amazing Supporters: Your contributions are invaluable, and they underpin every aspect of our mission. Your belief in our cause empowers us to provide the highest quality services and support to the children and young people of Western Australia. Together, we are making a tangible difference in their lives, forging a community where every child and young person feels safe to dream, flourish, and reach their full potential. Every day, you show us that this vision is not only possible but also achievable through collective effort.

Our Esteemed Board: Your guidance and commitment to Parkerville Children and Youth Care are integral to our success. Your wisdom and leadership continue to shape our organisation positively.

Children, Young People, and Families: We are humbled by your trust in us. Your resilience and determination inspire us to provide the care and support you deserve, offering hope for a brighter future.

Codesign Partners: More than 200 individuals who have collaborated with us to develop innovative responses to the unique needs of children – we couldn't have done it without your expertise and dedication.

Welcoming Communities: We extend our gratitude to the communities that have opened their hearts and doors to our teams, children, and young people. Your warmth and acceptance make all the difference.

Corporate Partners: Your commitment to helping our community, especially the children and young people at the heart of the Parkerville universe, is truly commendable. Your support propels us forward.

Generous Donors: Your generosity allows us to enhance our services for vulnerable Western Australian children and young people. Your contributions are changing lives.

Dedicated Employees: Our employees' unwavering dedication to every child and young person we support is awe-inspiring. Your passion for our mission is the driving force behind our accomplishments.

The Australian and WA Governments: We extend our heartfelt thanks for your ongoing support and funding of life-changing programs. Your partnership is pivotal to our work.

Volunteers: Your selflessness serves as a beacon of hope in the lives of the children, young people, and families we assist. Your generous commitment of time and energy to further our mission is a testament to your dedication, bringing hope to those we serve.

Together, we are creating a safer, more nurturing environment for the children and young people of Western Australia. Your support fuels our determination, and we look forward to another year of positive impact, collaboration, and progress.

Thank you for standing with Parkerville Children and Youth Care as we work towards a brighter future for all.



Cultural and diversity statement

At Parkerville Children and Youth Care, we are dedicated to increasing our knowledge and understanding the needs of people from all walks of life and backgrounds. We celebrate diversity, actively build inclusivity into our way of being, and provide spaces where children, young people and their families feel welcome, safe, and seen.

Parkerville Children and Youth Care is steadfastly committed to reconciliation, increasing our cultural awareness and competence, developing respectful relationships and partnerships, and creating meaningful opportunities in collaboration with Aboriginal and Torres Strait Islander people.





**Parkerville Children
and Youth Care (Inc)**

1 Watertank Way, Midland WA 6056

Phone: 08 9235 7000

Email: adminteam@parkerville.org.au

www.parkerville.org.au

ABN: 86 437 092 401