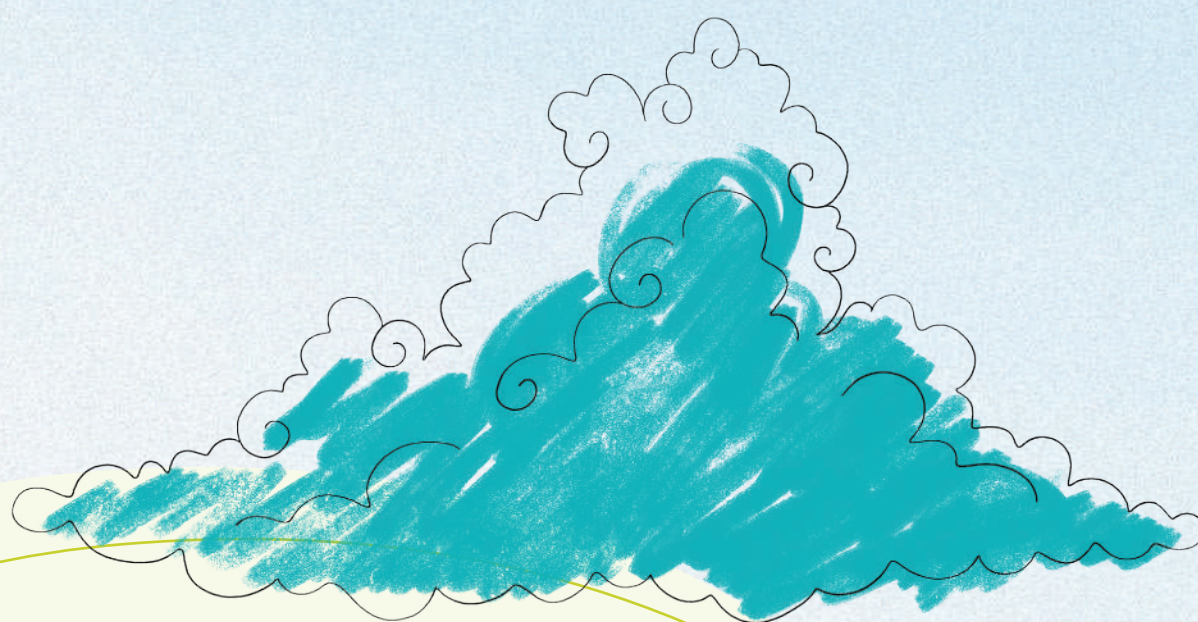
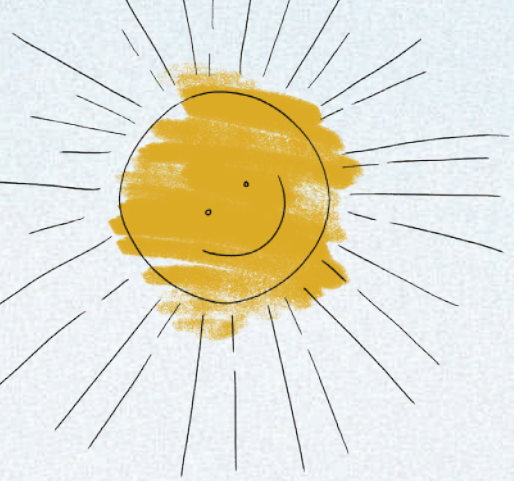




Annual Report 2021/2022

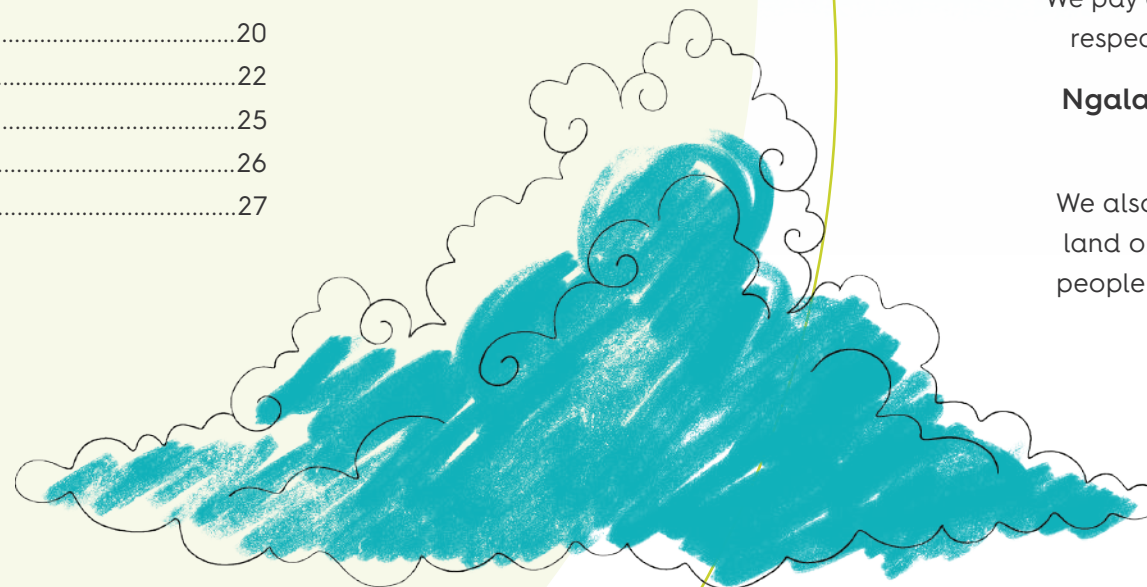
PARKERVILLE CHILDREN
AND YOUTH CARE





Contents

Acknowledgment of Country.....	3
Message from our Chair.....	4
Message from our CEO.....	6
Our universe.....	8
Our impact.....	10
A home away from home.....	12
Advocating for all children.....	14
Building connected communities.....	18
Empowering education.....	20
Preventing youth homelessness.....	22
Fundraising for the future.....	25
Our finances.....	26
Thank you.....	27



In the spirit of reconciliation, Parkerville Children and Youth Care Inc. acknowledges the Traditional Custodians of Country throughout Australia and their connections to land, sea and community. We pay our respects to their Elders past and present, and extend that respect to all Aboriginal and Torres Strait Islander peoples today.

Ngala kaaditj Wadjuk Noongar moort keyen kaadak nidja boodja

We also specifically acknowledge the traditional custodians of the land on which we locate the majority of our services - the Wadjuk people of the Noongar nation and pay our respects to their Elders past and present.

Message from the Chair

It is with pleasure that I present my first Chair's Report after being appointed to the role in early 2022, replacing the Hon. Wayne Martin AC QC.

Parkerville Children and Youth Care is an organisation that strives to reflect its values in all its actions and activities. In a time of constant change and challenges across the organisation, as is reflected in the broader community, it is reassuring that we continue to strive with integrity to develop a sustainable future for and with children, young people and their families.

COVID-19 continues to challenge and shape our approaches and ability to fulfil our desire to be a leading organisation within the sector. The leadership of everyone involved with Parkerville Children and Youth Care has ensured the day-to-day activity for those we serve is as safe and positive as possible.



It is with this backdrop that the leadership and all teams continue to work through two significant issues. We are continuing to work through the process of claims from former residents in both the National Redress Scheme and the civil courts. Each of these claims requires significant support and resourcing. I am pleased to acknowledge that each claim is managed with integrity with the initial aim of ensuring the wellbeing of all involved. In owning our past, the leadership team is to be congratulated on its handling of such delicate and sensitive processes. The board is actively monitoring the program with the leadership team.

The second major challenging issue is that of the Award Review and Compliance program (ARC). Reflecting the value of striving to always be "truthful and accountable", ensuring all employees rights and benefits have been treated equitably and fairly has been paramount for both the Parkerville Children and Youth Care leadership team as it works through the process and the Board as part of its governance of the organisation.

While this has been a tedious task for all, I want to thank all staff for their patience. Awaiting a definitive process agreement from the Fair Work Ombudsman is essential before we can progress the program.

The Board

There have been several changes to the Board over the past 12 months. As stated earlier the Hon Wayne Martin AC QC stepped down after several years as Chair. I know I share with many of you my sincerest thanks for the work Wayne completed as chair. I would like to welcome three new board members, Belinda Murray, Michelle Fyfe and Mike Deeks. All come with outstanding leadership skills and expertise that have already begun to shape our future.

Sadly, Father Chris Bedding has stepped down after nine years. We also said farewell to Andrew Fraser, who has been with the board for nine years, due to work demands. Craig Sommerville has also recently relinquished his position on the Board. I would like to express my sincere gratitude for the amazing contribution each of them has made to the ongoing success of Parkerville Children and Youth Care.

Our Future Success

Our dedicated and highly skilled team of caring individuals across the organisation, provides a great platform for a bright future. Building on existing initiatives such as Our Way Home, and Education, Employment and Training will complement significant investments in programs such as the Multi-agency Investigation and Support Team. This has been supported through a significant philanthropic donation from the Stan Perron Charitable Foundation. A signal of the belief others have in Parkerville Children and Youth Care to deliver for children, young people and their families. The donation from Stan Perron Charitable Foundation is amazing and I wish to sincerely thank them for their ongoing support.

Our fundraising approach continues to develop. To the many supporters of any or all of our events and functions I thank you and trust that you continue to support this wonderful organisation.

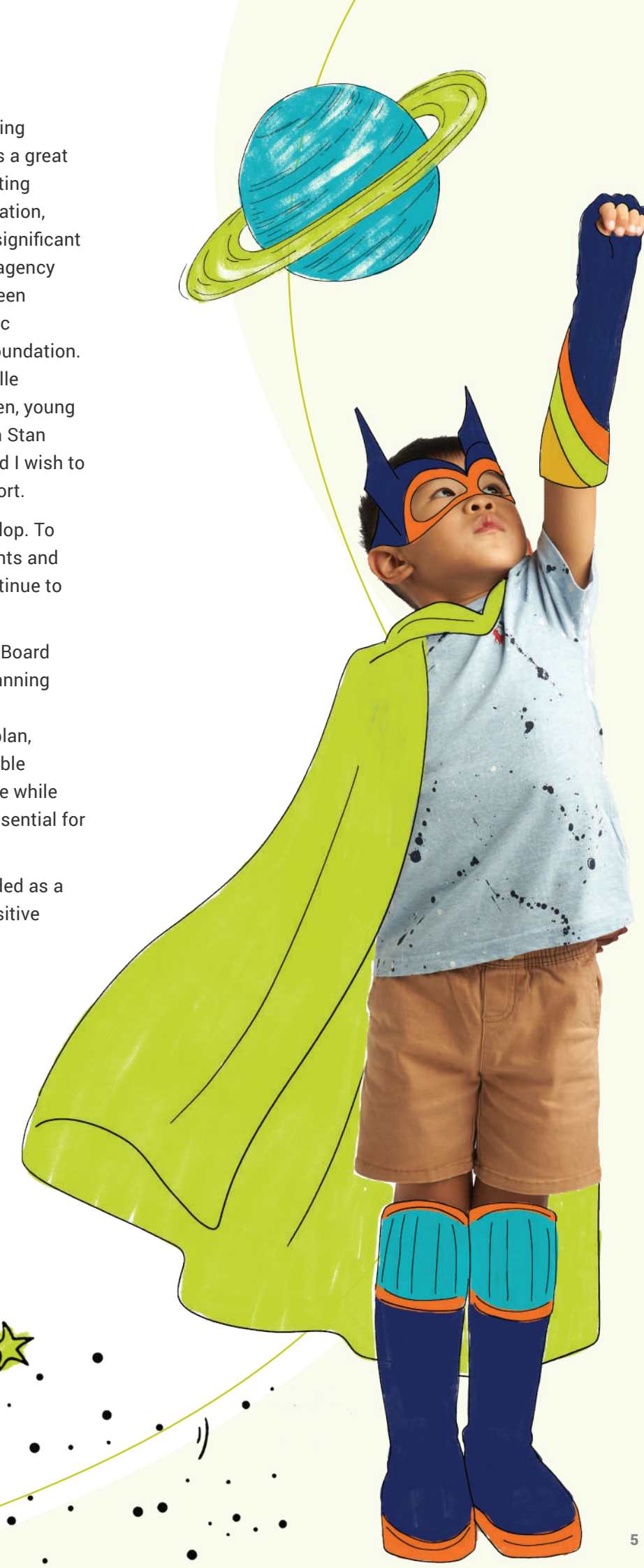
In partnership with the leadership team, the Board is fully invested in developing a strategic planning process that we hope will be out for broader consultation soon. Having a strong shared plan, focused on our values to develop a sustainable future for Parkerville Children and Youth Care while managing the challenges of today, will be essential for our continuous improvement approach.

Parkerville Children and Youth Care is regarded as a leader in the sector. In many areas it is a positive model for others and with the commitment and work of its employees, the Board and our supporters within the community, we can continue to ensure we are a premier organisation within this state.

My sincere thanks to everyone who has supported us to date. I look forward to continuing to partner with you to ensure every child in Western Australia can be as happy and engaged through our work with and for them.

Colin Pettit

Chair of the Board



Message from the CEO

One of the joys of my role is hearing of all the great work our teams do and the impact our services and supports have on the wellbeing of the children, young people, families and communities we serve.

Collective goals for greater outcomes

Recently I have also been hearing a lot about the positive personal and service level impact we have on our partners as we collectively go about our work.

Our partners talk about the service quality they see every day from our team, and the team's dedication and commitment to the best possible outcomes. They also talk about how they value our team's way of working with them and especially how there is a focus on inclusion, support, demonstrated genuine care for everyone's wellbeing, our values-laden decision making, and how our team will always go an extra mile or two to ensure the best possible joint outcomes for children, young people, and families. It is with a lot of pride in the values driven work of our people that I share this feedback with you.

Making safety a priority

Our strengths have also shone through in other areas. This year we were reaccredited as a Child Safe Organisation. The strengths the auditors found included a team that is fully aligned on child wellbeing, and the criticality of children and young people being at the centre of all that we do; our child safe culture and dedication to making sure we create and sustain safe places and practices so that all children and young people are protected; our commitment to building and/or influencing child safe cultures and practices outside our organisation; our eagerness to access and hear the voices of children and young people in our work; and our governance practices and Board engagement in child safety.

Building a future for Our Way Home

We are currently in a procurement process for out of home care services. This is the first time in over 13 years that out of home care services have gone to open tender. Our team has worked hard to submit an exceptional tender application, however with these tenders there is never a guarantee that we will be successful. We have put our very best foot

forward and have based our application on the new model of service we have been codesigning over the past two years and nine months.

Our Way Home has proven to be a model of care that has ignited interest both here in Western Australia but also nationally and internationally. Our team have presented the model at the International Society for the Prevention of Child Abuse and Neglect (ISPCAN) conference in Canada, at a National conference, and soon via the global entity the Better Care Network who has requested that we share the practice guidelines, new tools and also the service blueprint via their clearing house for new and emerging practice. More importantly, the children and families we have been supporting via this model have told us how much they value the focus on quality care, family connection, belonging, identity, culture and community – this is the sort of feedback we love the most, as it tells us we are on the right track.

Stronger together

This year has also thrown up some challenges. Like every other organisation we have had challenges relating to COVID-19 – what has been heartening has been our team's dedication to ensuring minimal disruptions to service so that children, young people and their families remain supported and have access to what they need. We have also been undertaking a complex piece of work on our remuneration structure, taking significant steps towards being compliant and aligned with Award conditions. Our team has, once again, worked hard alongside us to identify issues, find solutions and work towards a better tomorrow and I want to acknowledge their patience while we have unravelled some complex areas. We now await decisions from Fair Work to enable us to complete this major project and move into our new way of being.

Metronet has made an impact on Parkerville Children and Youth Care this year. The extension of the rail line to Byford is well overdue and we are excited about the opportunity this much needed transport option will bring to the community, especially to those people who do not have access to or cannot afford to run motor vehicles. The impact for us of this significant infrastructure

project is that the George Jones Child Advocacy Centre will be affected both during the build and post the opening of the line. Over the course of the last nine months, we have been working closely with Metronet, the Minister for Transport, and the Public Transport Authority to relocate our services and Child Advocacy Centre. I am pleased to let you know that we will be moving to Jull Street in Armadale in early 2023 – the location provides us with the space we need, the parking we need, the access to public transport services we wanted, and it also enables people to access other community assets easily such as parks, libraries, coffee shops and so on.

The Stan and Jean Perron Child Advocacy Centre (SJPCAC) has also seen some changes. We are about to welcome the Child and Adolescent Mental Health Service (CAHMS) to our site. The addition of CAHMS team will see the SJPCAC further evolve into a highly specialised child and young person service centre. It will be exciting to track the outcomes and impact of the work of this centre on child and young person wellbeing over the coming years.

Our new horizon

Our future as an organisation has been something we have been working on this year. We are in the process of developing a new strategic plan to guide our activities as we move towards our next horizon. It's an exciting time as we consider our next steps and dream big about our potential to make a positive impact towards helping Western Australia to be the safest place in the world for children and young people.

The power of our community

Finally, and most importantly I want to say thank you. Thank you to our supporters, our funders, our peers and colleagues, and to our ever-increasing cheer squad. Without you we couldn't achieve what we do, nor could we sustain ourselves without the warmth and care you send our way. I know that our whole team draws on your positive regard, kind words, and active support so that they can in turn provide that to the children, young people, families and communities we serve.

Kim Brooklyn

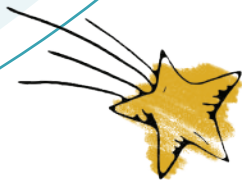
Chief Executive Officer



Our universe

From Parkerville Children and Youth Care’s humble beginnings as a children’s home on an 18-acre block in the Perth Hills, we have evolved into a dynamic and professional organisation that is leading the way in innovative and responsive services for Western Australian children and young people.

Today, we are driving change through evidence-based therapies and expert knowledge. The safety and wellbeing of children, young people and families, and ensuring their voices are heard, remains at our heart.



What We Do

We provide advocacy, services and supports to reduce the impacts of child abuse and other adverse childhood experiences - and in doing so, help WA become the safest place in the world to bring up children and young people.

Our Purpose

To create a community where every child and young person thrives.

Our Vision

Western Australia is the safest place in the world to bring up children and young people.



Our Values



Bold and Courageous

We stand up for what is right and assist to amplify the voices of the children, young people, families and communities we support.



Curious and Humble

We search out information and data that will help us remain at the forefront of all that we do.



Caring and Respectful

We acknowledge and embrace the diversity and individuality of everyone we meet and all those we serve.



Hopeful

We believe in the power of positivity and are optimistic about change, having faith that together we can overcome any challenge we may face.



Truthful and Accountable

We are committed to being open, honest and taking responsibility for our actions.

Our commitment to redress

We continue to be truthful and accountable for the parts of our history that resulted in some children in our care suffering abuse. It is not a history we are proud of, and we are deeply and sincerely apologetic to those people who suffered. We hope that in working with the former residents, they feel heard and supported in ways that are caring and respectful, kind and compassionate, warm and genuine, and ultimately assists them in their healing journey.

The lessons of the past are ever present in the ways we work with children today. As an accredited Child Safe Organisation delivering quality services, our teams’ dedication to valuing children and young people, and our commitment to ensuring children and young people’s voices are heard, all play an important role in ensuring we provide the best support and care possible in a safe environment.

A child safe culture

As the first Child Safe accredited organisation in Western Australia, we pride ourselves on our Child Safe standards and approaches to service delivery. We are committed to ensuring the safety and wellbeing of children and young people by putting their best interests first in everything we do.

Parkerville Children and Youth Care operates to the highest standards of ethics and professionalism and in accordance with the Australian Childhood Foundation’s Safeguarding Children Standards and we are proud to have once again been successful in reaccreditation with commendation on our Child Safe culture embedded throughout the organisation.

We hold ourselves to exemplary conduct, never losing sight of the trust that families and the community have placed in us to help transform the lives of children and young people at the heart of Parkerville Children and Youth Care. We have taken the learnings of the past into the organisation we are today to focus on the future and the potential of every child who finds their way to us.

Our recruitment, training and operating procedures safeguard children and protect them. Parkerville Children and Youth Care has a comprehensive reporting process to ensure any suspicions and disclosures of child abuse are identified and dealt with. Abuse in any form will not be tolerated.



A place for everyone to feel safe

We enthusiastically embrace our multicultural community and pay our respect to the First Nation Peoples of Western Australia, committing ourselves to action and reconciliation.

We’re proud of our Reconciliation Action Plan (RAP), formalising our commitment, and sharing our vision – that every Aboriginal and Torres Strait Islander child, young person and family experiences equality, dignity and respect in their lives, have access to culturally competent, safe and secure services that meet their needs and that all children, young people and families are supported to thrive.

With assistance from Kambarang Services, and Yokai, both Aboriginal Community Controlled Organisations, as well as Christine Coyne and Associates, we believe we can meet our ongoing cultural development towards competency and to continue to build on our Aboriginal engagement strategy so we can be confident we are providing a culturally safe and responsive service.

Our impact

For the families at Parkerville Children and Youth Care, we are a place of hope. Every child, young person and family in our Parkerville Universe is on their journey towards healing and recovery. It's our role to support their journey and provide whatever it takes for them to be able to thrive and reach their full potential despite the challenges they have faced.

While our Universe is far-reaching, it is only made possible by working with communities to provide place-based services for greater impact. Thank you to everyone who shares their community with Parkerville and the children and young people we serve.



Children affected by child sexual abuse supported in our **Child Advocacy Centres**.



Families received **intervention support** after experiencing abuse.



Children and young people supported through **Protective Behaviours Education**.



Children and young people supported by **Therapeutic Services**.



Children and young people **provided a safe place to live** in our Foster Care, Group Homes and Youth Accommodation.



Children and young people were **reunified with their families**.



Families supported through **Community Services Program**.



Young people and families supported through the **Reconnect and Moving Out, Moving On Programs**.



Early Intervention Sessions held at Child and Parent Centres.



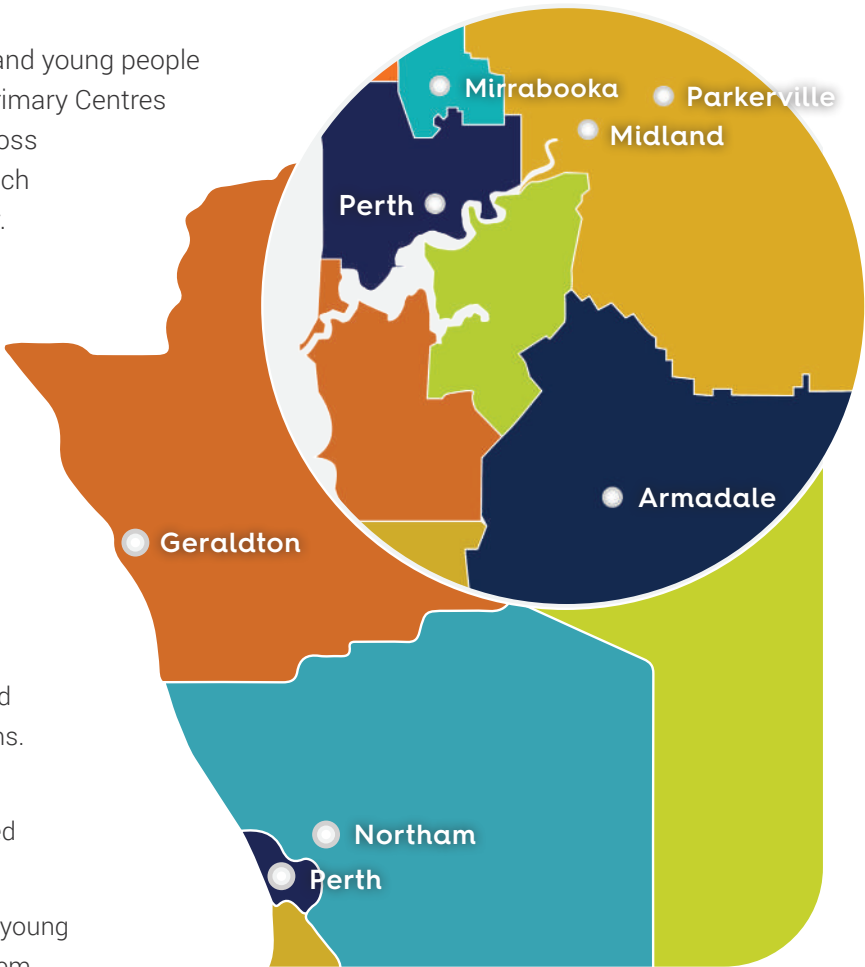
Education, Employment and Training **students graduated**.

Our Locations

We are committed to supporting all children and young people anytime they need our services across five Primary Centres and seven Satellite Service Delivery Hubs across Western Australia and we also provide outreach services to meet the needs of the community.

All of our locations are:

- Safe places where children learn how to be children; where children get to be children.
- Places where the resilience and strengths of children and young people are revered, and where families are nurtured and celebrated.
- Places where truth is acknowledged, the wrongs of the past and the hurt they caused begin to heal, and hope for the future blooms.
- Places that extend their arms into the community to wrap around people who need support and a champion.
- Places of learning, not just for children and young people, but for everyone who works with them.



A home away from home

Overcoming challenges to find strength

No report would be complete without noting the COVID-19 pandemic and the effect this had on service delivery during the year. The pandemic saw the world plunge into a state of fear, uncertainty, confusion and in places, panic. While these emotions were played out on the world stage, they were also evident in each of our services and homes.

Initially our staff, clients and their families faced the unknown of becoming unwell with COVID-19. Family contact arrangements became uncertain as traditional face-to-face contact became unmanageable. Occurring together, these factors created a difficult environment in which to provide the high-quality services that our committed team of psychologists, carers, team leaders and support staff provide. People, planning, and communication were key to navigating this period, taking into consideration service delivery and safety.

Having the right people in the right place at the right time has never been as critical. Amazing people accomplished amazing feats, staff assumed further

responsibilities, maintained the contact between children in our care and their families through digital measures and ensured children were cared for and supported when they were unwell. Ultimately, the teams guaranteed that services went uninterrupted in a professional and dedicated manner frequently putting the needs of others above their own needs.

Understanding their uniqueness

The Out of Home Care Community Group Living services are a complicated endeavour, with many factors to consider including matching children to ensure a harmonious living environment. However, there are times when a child's needs exceed the services available in a group living environment. In the past year, we were faced with this challenge and proudly created a Specialised Fostering Option for two separate children. This entailed the establishment of two individual properties, one is a Parkerville Children and Youth Care property and the other we worked collaboratively with the Department of Communities Child Protection and Housing to obtain. Both situations were designed around the individual needs of each child, including the recruitment of specialised carers.

The children received one on one care and were supported by a Team Leader, psychological services, Occupational Therapy, and the children's immediate families where appropriate. For one of these children, this individual approach has led to them living with a foster family. While there continues to be challenges as the child grows and heals, thanks to the dedication of the carer and supporting team we are continuing to care for the child and see positive outcomes.

Our Way Home

Over the past two years, we have stepped outside of tradition and grown into an organisation that is flexible and adaptable to the ever-changing needs of children and families. Our journey to redesign out-of-home care services and transform the experiences of children in care and their families, in a state where the number of children requiring out-of-home care is growing each year.

Supported by Innovation Unit, Parkerville Children and Youth Care has developed a new model of care called Our Way Home that is centred around elevating the voices of children, young people and their families. Connection to family, community and culture are embedded as key to resolving trauma and growing into happy, healthy people. Our Way Home delivers safe, stable, and nurturing environments to support children and young people to grow into equipped, connected, and empowered adults.

Building trusting relationships

Our Way Home positions deeper connection as the default setting for trauma-informed care, and seeks reunification as its end goal, led by the Family Link Worker. The Family Link Worker helps to build trusting relationships between the child's family and their carer, as well as supporting carers to continue and build upon these connections over time.

With support from a dedicated team, Parkerville Children and Youth care is working to build trust amongst those who play an important role in a child

or young person's life, and give both them and their loved ones a closer connection and greater say in their care journey. As Our Way Home expands, the positive outcomes for children, young people, and their families continue to flourish.

Connections for a stronger future

To expand Parkerville Children and Youth Care's cultural connection, we have partnered with Wungening Aboriginal Corporation. The partnership brings extensive skills, experience and knowledge in the delivery of services to the community.

Our aligned values and commitment to excellence will ensure the services we deliver are meaningful, outcomes-driven, culturally relevant, evidence-based, Child Safe, and aimed to assist children and young people to live great lives as adults.

Together, Parkerville Children and Youth Care and Wungening Aboriginal Corporation will provide Out of Home Care services, creating an agile continuum of care to meet the needs of each individual child in our care as they grow and change.



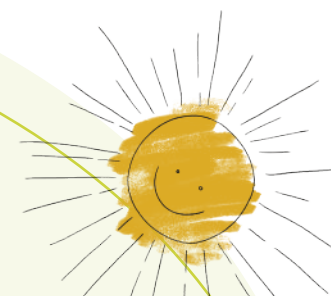
Collaboration to create connections

Milly is a primary school-aged child and has been in care since her birth, with no contact with any biological family members during that time and no family members identified.

With collaboration between Parkerville Children and Youth Care's Team Leader, family Link Worker and the Department of Communities, a genogram was completed. Using some of the information they discovered, the Aboriginal Practice Lead approached family members and started to build relationships with them and build trust between the family and Parkerville Children and Youth Care.

Through these efforts, a huge family network has been identified for Milly - including nannas, cousins, and a sibling. They initially sent photos, followed by regular phone contact with a view to meeting face-to-face.

Always an advocate, Milly's carer worked with her to explain who her family members are and the Aboriginal Practice Lead has also been talking to her, to help prepare her for this meeting.



Advocating for all children

For over a decade Parkerville Children and Youth Care's Child Advocacy Centres have been a necessary safe place of hope for children, young people and families who have experienced abuse. The Child Advocacy Centres are community-based, family-friendly facilities where professionals from different agencies come together to provide specialist services, including Police, child protection workers, psychologists, child and family advocates and other allied health workers to form a dedicated Multi-agency Investigation and Support Team (MIST).

The MIST is a co-located and multi-disciplinary model working within trauma informed principles aimed to reduce the harmful impacts of trauma from abuse. The MIST provides Western Australia's first truly integrated response to child sexual abuse.

By working together in supportive environments we can actively reduce the harmful and long-term impacts of abuse related trauma.

Healing together

The MIST has continued to expand and evolve, making significant gains for children, young people and their families impacted by child sexual abuse.

This year Parkerville Children and Youth Care's MISTs supported 1,280 children and young people who experienced trauma from abuse, an increase of 19.63% and sadly, this need is growing.

With the MIST, Parkerville Children and Youth Care's Child and Family Advocates work with children, young people and families to ameliorate the harmful impacts of disclosing abuse whilst complementing the investigative, child protection and justice processes that ensue. Parkerville Children and Youth Care's Child and Family Advocates work closely with the MIST Psychologists to provide necessary risk assessment and management to ensure the safety of every child or young person. Children, young people and families may receive further wrap-around care through Protective Behaviour sessions, counselling, intensive therapeutic interventions, psychoeducation, family therapy and other supports as needed so they can heal.

Our growth is a representation of the increasing need for Parkerville Children and Youth Care's Child Advocacy Centres and the MIST.

Empowering education

Protective Behaviours continues to be a vital aspect service at the Child Advocacy Centres. Available to all children, young people and families who are identified by the Western Australia Police Force (WA Police) and Department of Communities – Child Protection and Family Support as requiring additional support and psychoeducation, the program develops skills to better manage difficult situations related to child safety and abuse.

The Protective Behaviours program helps children and young people identify potentially unsafe situations, enhance problem solving and communication skills, and empowers them to deal with difficult or hostile situations to instil the right to feel safe and preserve their physical and emotional wellbeing. Throughout the program, Parkerville Children and Youth Care upsills parents, carers and those that work with children in recognising the signs of child abuse, how to talk to children about safety and secrets, how to respond to concerning child sexualised behaviours and how to manage disclosures.

Making a difference together

The collaborative working relationships Parkerville Children and Youth Care has developed with the WA Police, Department of Communities – Child Protection and Family Support, and Allied Health Workers, have been essential to building knowledge and skills, and providing the best support to children, young people and their families.

Parkerville Children and Youth Care's Child and Family Advocates work with new MIST Interviewers and WA Police Detectives to facilitate best practices. To date, WA Police and the Department of Communities - Child Protection and Family Support have remained actively engaged in the MIST, with WA Police Detectives undertaking further training in trauma facilitated by Parkerville Children and Youth Care. To continue knowledge sharing, Child and Family Advocates arrange joint training and development days with the MISTs and other partner agencies to promote collaboration between all stakeholders and provide psychoeducation and understanding of childhood trauma.

Growing for the community

We are thrilled and grateful that through a five year partnership, the Stan Perron Charitable Foundation is bringing us closer to securing the future of our current MIST services at the George Jones Child Advocacy Centre in Armadale, the Stan and Jean Perron Child Advocacy Centre in Midland, and the Perth District Office of the WA Police.

The funding will also enable a feasibility study of the much needed expansion into the south west metropolitan corridor and support important research into the outcomes of the service, identifying the impact the MIST and Child Advocacy Services provide to the community. The vision of the Child Advocacy Centres and the MIST is to move forward on evaluation of the model, aligning with National Children's Alliance standards and incorporating a more holistic family systems approach.

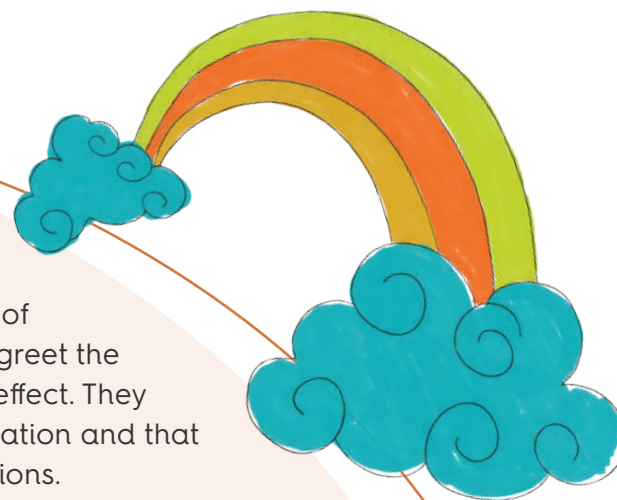
We are dedicated to supporting children, young people and their families who have been impacted by sexual abuse, or are at risk of sexual abuse, and are continually working to enhance our services to meet our diverse community needs.

"Parkerville's Child and Family Advocate is one of the first people along with the investigating officer to greet the victim and their family. This has a calming and positive effect. They feel at ease knowing that this is not a typical police investigation and that they have the support of other external organisations.

Parkerville Children and Youth Care's valuable contribution has been noticed by many other investigators within the Child Abuse Squad. Teams that do not have an embedded Child and Family Advocate available to them, have requested the support of Parkerville Children and Youth Care services on many occasions.

It is evident, that the continuation and the expansion of the model will enhance government response to child abuse offences. Additionally, the concept of Protective Behaviours utilised by Parkerville is a step in the right direction towards awareness and prevention of child abuse in Western Australia."

- Western Australia Police Force





Parents and Children's Therapeutic Service

Parkerville Children and Youth Care's Parents and Children's Therapeutic Service provides specialised therapeutic service to children, young people and families affected by child sexual abuse.

The service continued to meet the needs of the clients by implementing a number of COVID-19 safety measures including meeting via telehealth.

Many clients experienced additional stress as a result of COVID-19 and associated impacts of school attendance, engagement with peers and mental health. Some parents reflected on the flexibility offered by the program and reported on the benefits of being able to engage via telehealth.

To further respond to the needs of children, young people and parents, Parkerville Children and Youth Care relocated the Mirrabooka office to create a more child-friendly therapeutic space for clients.

The Parents and Children's Therapeutic Service has seen a significant increase across a number of areas. This difference is largely due to the increase in multiple family members accessing the service.

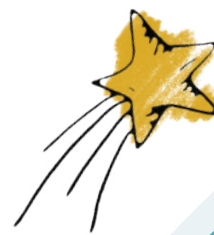
This has been a growing trend in the sector and having multiple clinicians has further allowed the service to treat families holistically rather than sending family members to multiple agencies.

Parkerville Children and Youth Care has continued to see highly complex clients, including children and young people that engage in harmful sexual

behaviours, comorbid psychological disorders, substance abuse, suicidal ideation, and chronic self-harm. Working with these clients requires a specialist tailored framework, considerable planning, and clinical expertise of staff to ensure positive outcomes for all clients involved, including comprehensive psychoeducation to parents.

This emerging trend continues to be closely monitored and an increased number of team meetings held, to identify and manage service wide trends, issues, and difficulties ensure team collaboration and self-care is maintained.

Parkerville Children and Youth Care's dedicated therapeutic team are registered Psychologists with specialist training and regular clinical supervision from internal Board Approved Supervisors.



"I would like to express the profound impact that Parkerville Children and Youth Care's therapeutic services has had on our family.

We were referred via the child abuse squad after mandatory reporting. What followed was a police investigation, arrest of Sally's abuser and subsequent trial.

During the early stages we were referred via our General Practitioner to various psychologists, family therapists, and individual counselling through employee access programs. It was not until our daughter met Ebony through Parkerville Children and Youth Care that we had some productive guidance to begin taking some steps forward.

We had a court case to prepare for and needed ongoing support, Parkerville Children and Youth Care was there the whole time. Linda recognised Sally's eating challenges and suggested a referral to our GP to address it. We had absolutely no idea how Sally was struggling at this time, always keeping up a happy front, not wanting to let people down.

We have watched Sally return from a very dark place to her former spirited and independent self. Linda offered us practical things we could do week by week to lift Sally's burden, things like rearrange her room, decorate it and fill with love and joyful things, consider getting a puppy, and importantly pick us up on things that were of concern to Sally.

The support around the trial and its aftermath have been invaluable, Sally has grown stronger and is now a confident, proud young lady who I know is destined for great things. We are going through trauma counselling for Sally with Parkerville Children and Youth Care and feel she is in the best hands. We are eternally grateful for the help we have received, not only for Sally but for her father and myself, and her brother.

We have received help from a child psychiatrist, different psychologists, our wonderful general practitioner, an incredible dietician, the Swan Centre and can honestly state that Parkerville Children and Youth Care and Sandra have been the key component of all of Sally's care providers. When we were trying to reduce her appointments in order to get Sally back to full time school, Linda was the first-person Sally felt we had to fit in, a key element to her recovery.

We are infinitely grateful to have our daughter back, and feel Parkerville Children and Youth Care is at the centre of her recovery."

- Parents and Children's Therapeutic Service Client



Building connected communities

Parkerville Children and Youth Care's Child and Parent Centres specialise in the developmental needs of children and are designed to increase the capacity of families to help them provide appropriate experiences and a happy, healthy home environment.

Co-located at independent school sites, our centres are a resource for the whole community offering a wide range of services for children and their families, including education, psychology services, health checks and referrals, occupational therapy and development programs.



Supporting our communities at every step

The last year has been both a joy and a challenge for the Child and Parent Centres. The challenges of having to “mask up” and closely monitor COVID-19 safety measures proved to be particularly difficult to manage. Limited family networks for many in the communities meant local Early Learning Centres were vital to support them. The increase in demand for early diagnosis of developmental delays and lengthy waiting lists for families seeking access to the required health and education services via referrals made early detection during playgroups key. Due to mental health stigma, the team worked to establish trusting relationships with families before discussing the benefits of counselling as part of dealing with the past to fully thrive with their families into the future.

With the immense support of the Parkerville Children and Youth Care team, Westfield Park Primary School, Brookman Primary School and the Department of Education, the Child and Parent Centres provided seamless support to families.

New programs and events, greater service integration, and increasing exposure in the community has created one of the most exciting periods for the Child and Parent Centres. With a newly established team of highly competent, passionate, and committed individuals, the Child and Parent Centres have reached more families in new, dynamic ways. Staff have benefited from the excellent training opportunities provided by Parkerville Children and Youth Care as well as through the positive partnership between host schools to increase capacity and promote interagency collaboration.

Moments that connect the community

With the generous support of Bunnings, Cabots and Woodturners Association of Western Australia, we saw the installation of a community garden, complete with composting, yarning circle, cubby house, hopscotch, and a fairy garden at the Child and Parent Centre Brookman. What began as a local project by Cannington Bunnings, grew into an Area Project, elevating the initiative to receiving support from nine surrounding Bunnings stores.

The garden has flourished into a community garden with Bushtucker plants, vegetables, herbs, and fruit chosen by the families. The garden has been an opportunity to show children how to plant seeds and engage them in learning about gardening, harvesting, cooking and where food comes from.

The Child and Parent Centre Westfield Park hosted its first Family Fun Day, with support from the City of Armadale and a Local Area Committee member to combat the observed mental health decline in the community exacerbated by COVID-19, provide the opportunity for community connection, and increase awareness of available supports.

Lifeline WA, Telethon Kids Institute, Communicare, Armadale Library, The Fathering Project, Camillo Early Learning Centre and the City of Armadale showcased their services. Families also had access to Child and Parent Centre team and engage with early childhood teachers to ask questions about registering for kindy or their children's development and how to access services. With entertainment for families of all ages, the Family Fun Day increased the exposure of the Child and Parent Centre and local services in the community and connected families with further support for them to access.

Building stronger communities

The continuing focus of Parkerville Children and Youth Care's Child and Parent Centres will be embedding effective program strategies, designing a structure to support deeper program impact, and devising a strategic plan in collaboration with the community. The Child and Parent Centres will also focus on the effective continuation of service delivery and retaining families.

Parkerville Children and Youth Care's Child and Parent Centres are actively working towards further developing wrap-around services for families, including further mental health support, and building trust in the community to provide a soft entry approach to allied health and learning support services. Developing the connection between families in the community and cross-cultural education and socialisation remains a focus to continue enriching the communities.



Empowering education

Our Education, Employment and Training program is a unique, alternative education pathway for young people who are at risk of failing school.

We believe that each young person has different talents and skills. By working within their systems and listening to their voices, we can help them to be the very best versions of themselves. That starts with empowering them to believe in themselves and inspiring them to make positive changes.

We work with high school students who are failing or at risk of failing school to help them achieve their potential by developing their literacy, numeracy and life skills in a safe environment. Students learn basic work skills and are encouraged to develop a positive work ethic. We do this by giving students the opportunity to gain real working experience at our beautiful, historic campus in the Perth Hills under the supervision of our wonderful staff.

Since its inception in 1984, our Education, Employment and Training program has earned a reputation in the community as an effective model for giving young people the tools to become positive contributors to their community.



Inspiring limitless dreams

This year we have had 25 students graduate from the Education, Employment and Training program. The graduation continues to be a highlight for Parkerville Children and Youth Care as everyone is reminded of how far each student has come in their journey. We are proud to see improvements in each student's self-esteem, development of a career plan and keen interest in moving on in life. When students arrive in the Education, Employment and Training program they have a dislike for education, this changes over the course of the program and most students go on to further education or apprenticeships to achieve their career goals. Parkerville Children and Youth Care has built a reputation within the community, with the dedication and work ethic of our students, which has led to organisations seeking Education, Employment and Training students to fill apprenticeship roles.

In addition to our students achieving their goals, a highlight for this year was the Telethon grant to take on a full-time Youth Worker. This has enhanced the Education, Employment and Training program in so many ways. Parkerville Children and Youth Care's Youth Worker, Clint has transformed the bike workshop and has started programs in drug and alcohol, wellness, bike mechanics and career development. The students appreciated the extra support and having someone they trust to talk to each day.

Blackwoods have also continued to support Parkerville Children and Youth Care by providing Personal Protection Equipment for the students, and equipment as required for their development.

To continue improving the support available to students, staff participated in trauma training to complete the Professional Certificate in Understanding Childhood Trauma. Each student is unique, with their own challenges and goals. Whether they are looking to grow professionally or heal from adverse childhood experiences, we continue to be proud of everyone and humbled they gave us the opportunity to support them on their journey.

Creating a brighter future

Last year Sam joined the Education, Employment and Training program as a different person. Sam had not attended school for over two years and had no plans or ideas on what she wanted to do next with her life.

During Sam's time in the Education, Employment and Training program, our teachers and other students saw her confidence grow and being able to once again believe in herself and the opportunities that were available to her. Throughout the program, Sam started to show an interest in cooking and investigated it as a possible career path. With support from Parkerville Children and Youth Care's Teachers and Youth Worker, Sam applied for a chef course, which she excelled and was immediately offered an apprenticeship as a chef.

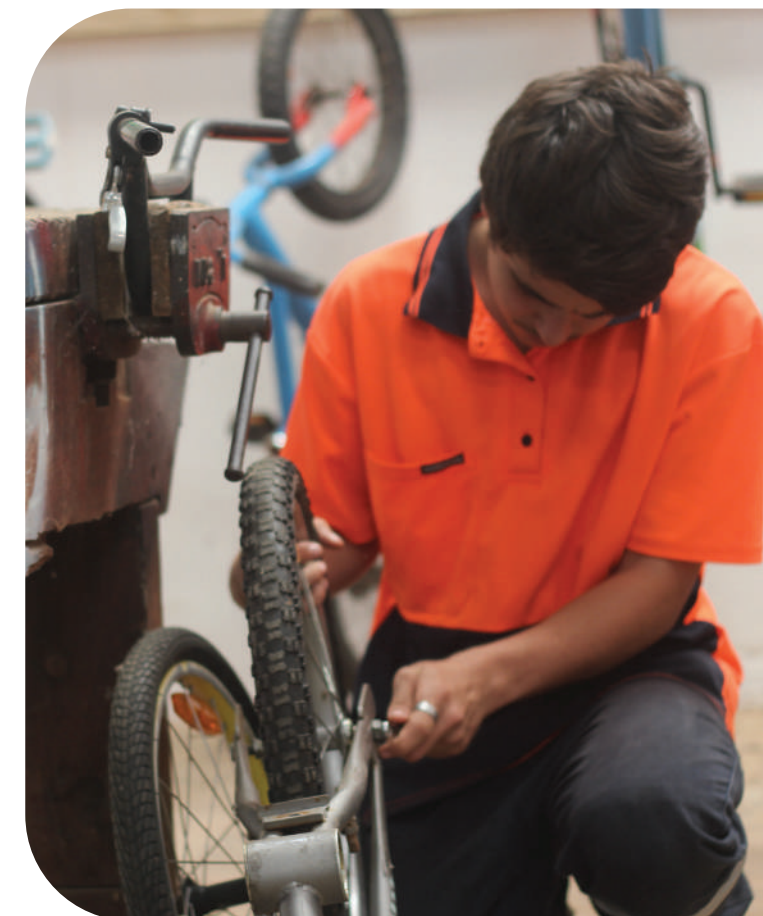
Sam is just one of many students that go on to achieve their goals. While the program enables students to grow, we believe it is each student that takes the challenge in their stride to achieve their goals.



A greater need

Each semester we can only take 12 students with funding from the Department of Education. However, we receive over 30-40 applications. We are seeing demand increasing as not all young people find that the school system is suitable and need an alternative learning platform. The combination of education and work skills we provide helps our students succeed. Parkerville Children and Youth Care sees the positive impact of alternative education, and with the number of students in Western Australia at risk of failing school, we hope to have the opportunity to take on more in future.

In the last year, we have seen over 200 volunteers work with us on the Education Employment and Training program through Corporate Volunteering. On the Corporate Volunteering days, the students work with a range of organisations and volunteers have an opportunity to learn more about Parkerville Children and Youth Care. The Corporate Volunteering days have also led to work experience, apprenticeships and job opportunities for our students as a result.



Preventing youth homelessness

Parkerville Children and Youth Care's Youth Homelessness Services and Supports provide young people experiencing homelessness or at risk of homelessness the support they need to gain secure housing and independence.

The young people who engage with these services work with us to claim their identity and purpose, and ultimately create a better future for themselves and us all.

Young Women's Program

Young women who are experiencing homelessness or at imminent risk of homelessness can find safety and help at Parkerville Children and Youth Care's Young Women's Program. The program offers stability, support and advocacy to young women to develop their parenting and independent living skills.

The continuation of COVID-19 saw a lot of changes that were essential to delivering a quality service to the clients at the Young Women's Program. Maintaining the safety of our clients and staff while working was crucial, and as a result, increased safety measures were implemented. Clients affected by COVID-19 were supported by Parkerville Children and Youth Care with parenting and other tasks to alleviate some stress.

The last year also had many achievements to be proud of, including individual or group workshops with the clients to help improve their parenting and independent living skills, and ultimately help them grow. The purpose of the workshops range from cooking, budgeting, food hygiene, water play with children, introducing solid foods to babies, self care, creating routines and more.

To help families feel more at home and comfortable while in the Young Women's Program, all units were fitted with new blinds and styled, and a smoking ceremony was held throughout the units by Aboriginal Elders.

The Young Women's Program offers safety, support and education, but it is the commitment to healing and growing from each client that makes the real long-term change to their lives. We are fortunate to support so many incredible young women each year.

Moving Out Moving On

Moving Out Moving On is a safety net designed to help young people, aged 15 to 21 years, who are experiencing homelessness, at risk of homelessness or residing in crisis or temporary accommodation.

The impacts of the housing crisis in Western Australia were felt by the young people engaging with Moving Out Moving On. While the waitlist for safe and secure housing increased, the team fiercely advocated for these young people to overcome the barriers to their preferred housing options.

The inequities faced by those under the age of 18 fleeing violence and abuse and seeking accommodation support were highlighted by the COVID-19, however, the team identified a systems advocacy approach was required to complement service delivery and has increased participation and presence in the appropriate networks as a result.

Funding for Moving On Moving Out remains a challenge, despite this, the team use innovative and creative means to meet the needs of young people and collaboration with service providers continues to be key in meeting the needs of young people.

The last year saw young people supported to access safe and secure housing when available, develop and increase their independent living skills, improve social-emotional development and address the impact of maladaptive coping strategies leading to fewer on the street or couch surfing.

To support young people on their journey, therapeutic support is provided to address trauma and referrals to health providers to address health concerns. The team also work with young people to re-engage them with education and day programs following extended periods of disengagement to see them reach their fullest potential.

Reconnect

Reconnect provides an outreach service for both young people and their families to help prevent youth homeless and build stronger connections within families. Young people and their parents are supported to navigate complex systems, specifically in relation to trauma from abuse, acute mental health presentations, homelessness and transiency, impacts of Family and Domestic Violence, and Centrelink.

Impacts of COVID-19 appeared ever present in the form of health impacts, fewer options for social support, homelessness and general anxiety about re-engaging in the community. For the most vulnerable families in the community, the impacts were elongated and persistent. By focusing on maintaining strong and trusted relationships with local referrers including high schools, community services, Department of Health, Department of Child Protection and Centrelink, and increasing our presence in the community, Reconnect was able to engage the community and tailor the service to meet the individual needs of families.

Reconnect expanded networks within the local community, leading to individualised and holistic service delivery for young people and their families. The Reconnect team attended the national Reconnect forum to continue providing best practice service delivery to achieve the best possible outcomes for families and young people.

Working alongside the MIST, Reconnect holistically responded to incidents of child sexual abuse using a whole of organisation response and utilising the areas of expertise already existing within the organisation.

Reconnect continues to support families to manage and respond to conflict, encourage young people to learn their rights, achieve their goals, and develop an increased sense of self-worth as a result. Parents are provided psychoeducation and supported to understand and respond to their teenagers in a way that promotes secure attachment, improved relationships and meaningful connection.

Armadale Youth Accommodation Service

Due to COVID-19 young people in the Armadale Youth Accommodation Service were having difficulty accessing mental health services due to closed referral points or long waitlists, and doctors due to the reduction of bulk billing from a number of practices. A lack of housing in the community also created challenges for the program staff and young people, as a result, many young people had to stay up to six months.

Despite these challenges we are humbled to provide necessary accommodation for young people to find their feet and go on to secure more permanent living. Allowing clients to stay longer than three months allowed for better outcomes for young people in finding stability and knowing there are people who want to give them the best support possible.



The achievements we have seen throughout the year also include those felt by each young person. Whether it is seeing a young person feel safe for the first time in a long time or their ability to open up and trust the staff. For some, it's healing or seeing their belief in themselves grow, improving their mental health and reducing or stopping self-harm. These are all achievements that not only impact the young person's life but our community.

In addition to providing accommodation and emotional support, each young person was provided other supports as required to help them heal and grow. These included assisting them to re-engage in education, training, or employment, helping them learn independent living skills. Young people struggling with drug or alcohol abuse were supported with drug education and harm minimisation and had access to a Support Worker for informal counselling and one on one sessions.



Support and Community Services

Support and Community Services delivers long-term, sustainable change to families to prevent homelessness through tailored interventions that address physical, emotional, therapeutic, practical and recreational needs.

COVID-19 necessitated a change in service delivery. To ensure the safety of staff and clients outdoor groups were held and vouchers were provided for school holiday activities. Despite restrictions in the community, the team delivered tailored and individualised support to families, seeking safe and appropriate connections with community providers in the hopes of improving social networks.

The housing crisis resulted in decreased availability of transitional properties for families, however, the team significantly increased their presence within local networks to grow opportunities and advocate for vulnerable families.

In response to school closures, the Support and Community Services program increased education support which limited the impact on learning and saw children develop confidence, build social connections and demonstrate improved emotional and behavioural development. With education through Protective Behaviours, children demonstrated an understanding of how to problem solve and were more aware of unsafe situations, children also demonstrated resilience from emotional regulation strategies and an increase in social skills from opportunities to take part in recreational activities.

Through the Support and Community Services program, parents were supported to access safe and secure housing, improve their parenting skills and knowledge, improve routine and structure in the home, increase access to relevant community services and were supported to improve their networks to appropriately respond to their children's needs.

With these services Parkerville Children and Youth Care is giving, children, young people and families the opportunity and support they need to heal, grow and achieve their goals. Each day we are humbled by and admire their strength and willingness to overcome their challenges to create brighter futures for themselves and their family.

Fundraising for the future



The last year has continued to challenge the community impacting the everchanging landscape of fundraising. Despite these challenges, we have seen the Western Australian community connect with Parkerville Children and Youth Care's purpose and support the children, young people and families at the heart of our organisation.

Our fundraising activities, messaging and engagement continue to be aligned with our values – bold and courageous, curious and humble, caring and respectful, truthful and accountable and above all, hopeful. The 2021 Parkerville Charity Lunch and fundraising campaigns throughout the last year were an opportunity to show the community who Parkerville Children and Youth Care is and further define our brand positioning. As a result, we have seen organisations and community members connect with our purpose and feel hopeful for the difference their support can have for children, young people and their families.

Our journey towards sustainability

The future and wellbeing of thousands of children, young people and their families impacted by trauma from abuse are dependent upon Parkerville Children and Youth Care expanding its reach and accessibility of services to those in need.

Ensuring financial sustainability and the development of pipeline funding is crucial to the future of Parkerville Children and Youth Care, and the services and supports we provide to those most vulnerable members of our community; children who have been exploited, abused and neglected.

Since the first Child Advocacy Centre in Australia, the George Jones Child Advocacy Centre and the Multi-agency Investigation and Support Team (MIST), Parkerville Children and Youth Care has been committed to growing and providing sustainable services within our centres. Through a five year partnership, the Stan Perron Charitable Foundation is bringing us closer to securing the future of our MIST services.

With no government funding for the MIST services, Parkerville Children and Youth Care's vital Child Advocacy Centres have been the result of the

Western Australian community coming together to ensure children, young people and families who have experienced abuse have a safe place to begin their healing journey. While we continue to work towards sustainability, the Stan Perron Charitable Foundation is helping us make this a reality.

Helping reshape the future

Parkerville Children and Youth Care supports children, young people and families to heal from trauma so they can thrive, with best-practice and innovative services. This would not be possible without the generous funding and donations from Western Australian organisations and the community.

While we work to show you the impact that your support provides, it's Parkerville Children and Youth Care's frontline staff of carers, psychologists, and many more who see the impact every day, and the children, young people and families who feel the impact. Whether it's hearing a child speak again or seeing families reconnect, healing shows in different ways for every individual and it is our supporters who make that possible.

Thank you for helping children, young people and families heal. Together we are stronger, have more impact, reach more children, young people and their families, and create a brighter future for everyone.



Our finances



Parkerville Children and Youth Care receives income through contracts as awarded by various funding bodies which assists to provide services in the community, philanthropic grants which develops innovation and capacity, alongside investment income and donations gifted by the community.

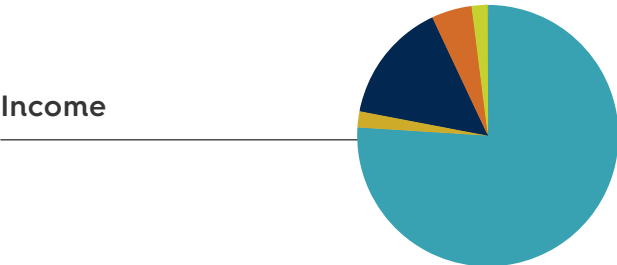
Parkerville Children and Youth Care is a registered charity with the Australian Charities and Not-for-profits Commission (ACNC) and holds a Deductible Gift Recipient (DGR) status as endorsed by the Australian Taxation Office (ATO). This means the community is able to make tax-deductible donations to our organisation, and can trust that we operate in a transparent and ethical manner at all times.

Sources of funding

During the 2021/2022 financial year, Parkerville Children and Youth Care received \$19.8 million in income which enabled us to continue to provide services to children, young people and families.

The Western Australian State Government continues to be a key stakeholder, with 76% of our funds being from contracts awarded from various state government departments and used to provide highly specialised services to our community's most vulnerable children, young people and families. A further 2% is provided by the Commonwealth Government, supplementing our funds for these services.

Parkerville Children and Youth Care is grateful for the philanthropic support we receive from both grants and community gifts. This year support was instrumental to ensuring the continuation of critical services through funding to our Child Advocacy Centres and MIST program, which we thank Telethon, Westpac, Department of Justice and those who supported via our annual Charity



State	76%
Commonwealth	2%
Grants	15%
Philanthropy	5%
Other	2%

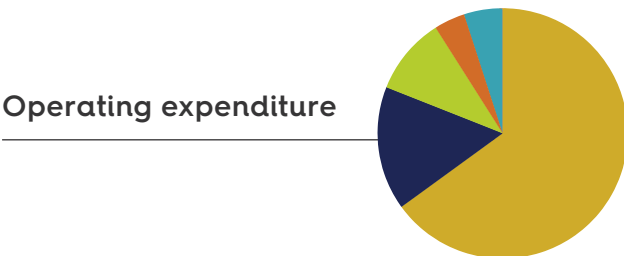
Lunch in 2021. Alongside Lotterywest funding for new innovative work developing our codesigned Our Way Home model for child centered care in the out of home care program. These funding opportunities remain an important part of our sustainability.

Expenditures

During the 2021/2022 financial year, Parkerville Children and Youth Care employed 155 staff, the vast majority of them, directly providing services for our clients.

Increases in services being provided and other activities resulted in program expenditure of \$17.2m up 9.5% on the prior year (this is excluding depreciation and non operating expenditure).

Given the historic nature of the work Parkerville Children and Youth Care participates in, there are civil and Redress claims currently underway, or being settled. Parkerville has provisioned for these claims which will be paid from historic assets and not operational or donated funds.



Children & Youth Residential	65%
Therapeutic Services	16%
Youth & Community Services	10%
Education Services	4%
Child Advocacy Services	5%

Thank you for your support

Parkerville Children and Youth Care values all of our incredible supporters for their contribution to our vision to make Western Australia the safest place in the world to bring up children and young people.

The support we receive for every facet of the organisation is invaluable and vital to providing the best possible services and supports to Western Australian children and young people so they can heal and live to their fullest potential.

We believe that together we can build a community where all children and young people feel safe to dream, to thrive, and to reach their fullest potential. Every day, you show us that it is possible.

Board: For your guidance of Parkerville Children and Youth Care.

Children, young people and families: For placing your trust in us that we can help you and provide the care and support you deserve so you can have hope for a bright future.

Codesign Partners: More than 250 people who have helped us to develop innovative responses to children's needs – we couldn't do it without you.

Communities: For welcoming our teams, children and young people.

Corporate Partners: For your commitment to helping the community, and the children and young people at the heart of the Parkerville Universe.

Donors: For helping us provide better services for vulnerable Western Australian children and young people.

Employees: For your dedication to helping every child and young person we support.

WA Government: For your ongoing support and funding of life-changing programs.

Volunteers: For nurturing and caring for the children and young people in our care.

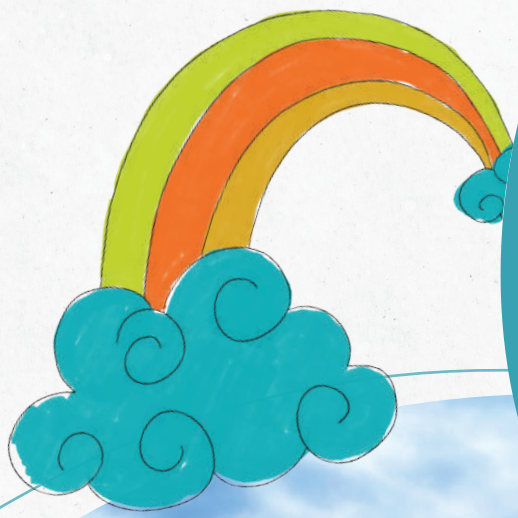


Our Partners



HANCOCK PROSPECTING PTY LTD





Parkerville Children and Youth Care (Inc)

Phone: 08 9235 7000

Email: adminteam@parkerville.org.au

Address: 1 Watertank Way, Midland WA 6056

www.parkerville.org.au

ABN: 86 437 092 401

